

## FBLN2 polyclonal antibody

Catalog: BS61309

Host: Rabbit

Reactivity: Human, Mouse

### BackGround:

Fibulin-1 and Fibulin-2 associate with Fibronectin and other extracellular matrix proteins. In bone marrow, Fibulin-1 and Fibulin-2 bind to Fibronectin in the adherent layer. Fibulin-1 expression is stimulated by estrogen in ovarian cancer cell lines and has been suggested as both an agent of metastasis in ovarian cancer cells and as an indicator for predicting cancer risk or aggressiveness in ovarian carcinomas. The mobility of cancer cells may be inhibited with increasing exposure to Fibulin-1. Fibulin-2 binds to the lectin domains of extracellular matrix proteins aggrecan, versican and brevican. Fibulin-2 is abundantly expressed in heart, placenta and ovarian tissue, where it localizes to basement membranes and connective tissue compartments. In mice, differential Fibulin-2 gene expression correlates with the early phase of diabetic kidneys and glomerulosclerosis. The gene encoding human Fibulin-2 maps to chromosome 3p25.1.

### Product:

Rabbit IgG, 1mg/ml in PBS with 0.02% sodium azide, 50% glycerol, pH7.2

### Molecular Weight:

~ 127 kDa

### Swiss-Prot:

P98095

### Purification&Purity:

The antibody was affinity-purified from rabbit antiserum by affinity-chromatography using epitope-specific im-

munogen and the purity is > 95% (by SDS-PAGE).

### Applications:

WB: 1:500~1:1000

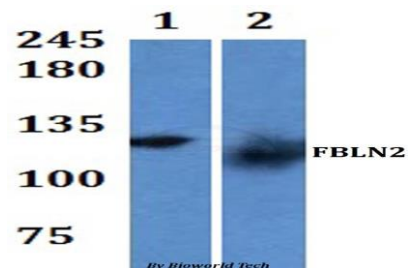
### Storage&Stability:

Store at 4 °C short term. Aliquot and store at -20 °C long term. Avoid freeze-thaw cycles.

### Specificity:

FBLN2 polyclonal antibody detects endogenous levels of FBLN2 protein.

### DATA:



Western blot (WB) analysis of FBLN2 polyclonal antibody at 1:500 dilution

Line1:Hela whole cell lysate

Line2:Raw264.7 whole cell lysate

### Note:

For research use only, not for use in diagnostic procedure.

### Bioworld Technology, Inc.

Add: 1660 South Highway 100, Suite 500 St. Louis Park, MN 55416, USA.

Email: [info@bioworld.com](mailto:info@bioworld.com)

Tel: 6123263284

Fax: 6122933841

### Bioworld technology, co. Ltd.

Add: No 9, weidi road Qixia District Nanjing, 210046, P. R. China.

Email: [info@biogot.com](mailto:info@biogot.com)

Tel: 0086-025-68037686

Fax: 0086-025-68035151