

## XCL2 polyclonal antibody

Catalog: BS61322

Host: Rabbit

Reactivity: Human, Mouse, Rat

### BackGround:

XCL2 is a small cytokine belonging to the XC chemokine family. Chemokines are a group of cytokines. Members of this group of so-called C-Chemokines belong to the SCY family of cytokines and are designated XCL (L for ligand) followed by a number. XCL2 is the new designation of SCM-1-beta. XCL2 is highly related to another chemokine called XCL1. XCL2 gene is located on chromosome 1 in humans. XCL2 is predominantly expressed in activated T cells, but can also be found at low levels in unstimulated cells. XCL2 induces chemotaxis of cells expressing the chemokine receptor XCR1. XCL2 gene has been proposed to participate in pathways (Chemokine signaling pathway, Cytokine-cytokine receptor interaction) and processes (blood circulation, signal transduction, chemotaxis, immune response). XCL2 are expected to have molecular function (chemokine activity) and to localize in various compartments (extracellular space, extracellular region). A putative protein interactor has been described (XCR1). The spliced mRNA putatively encodes a good protein, containing small cytokines (intecrine / chemokine), interleukin-8 like domain; the complete protein appears to be secreted.

### Product:

Rabbit IgG, 1mg/ml in PBS with 0.02% sodium azide, 50% glycerol, pH7.2

### Molecular Weight:

~ 13 kDa

### Swiss-Prot:

Q9UBD3

### Purification&Purity:

The antibody was affinity-purified from rabbit antiserum by affinity-chromatography using epitope-specific immunogen and the purity is > 95% (by SDS-PAGE).

### Applications:

WB: 1:500~1:1000

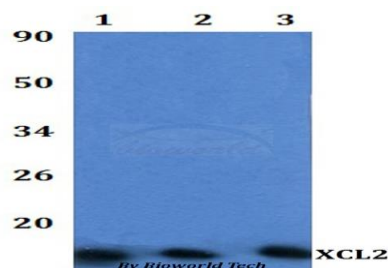
### Storage&Stability:

Store at 4 °C short term. Aliquot and store at -20 °C long term. Avoid freeze-thaw cycles.

### Specificity:

XCL2 polyclonal antibody detects endogenous levels of XCL2 protein.

### DATA:



Western blot (WB) analysis of XCL2 polyclonal antibody at 1:500 dilution Lane1:HEK293T whole cell lysate

Lane2:RAW264.7 whole cell lysate Lane3:H9C2 whole cell lysate

### Note:

For research use only, not for use in diagnostic procedure.

### Bioworld Technology, Inc.

Add: 1660 South Highway 100, Suite 500 St. Louis Park, MN 55416, USA.

Email: [info@bioworld.com](mailto:info@bioworld.com)

Tel: 6123263284

Fax: 6122933841

### Bioworld technology, co. Ltd.

Add: No 9, weidi road Qixia District Nanjing, 210046, P. R. China.

Email: [info@biogot.com](mailto:info@biogot.com)

Tel: 0086-025-68037686

Fax: 0086-025-68035151