

IL27RA polyclonal antibody

Catalog: BS61323

Host: Rabbit

Reactivity: Human, Mouse, Rat

BackGround:

IL-27 is a heterodimeric cytokine that consists of EBI3, an IL-12p40-related protein, and p28, a IL-12p35-related polypeptide. IL-27 triggers expansion of antigen-specific naive CD4-positive T cells and promotes polarization towards a Th1 phenotype with expression of gamma-interferon. IL-27 contributes to the development of an adaptive immune response through its action on CD4-positive T cells, and also directly acts on cells of the innate immune system. IL-27 protein levels increase upon activation of antigen-presenting cells. IL-27 protein induces orphan cytokine receptor IL-27R (WSX-1)-dependent clonal expansion of naive but not memory CD4(+) T cells. IL-27 signaling through IL-27R and gp130 also induces phosphorylation of Stat1-5.

Product:

Rabbit IgG, 1mg/ml in PBS with 0.02% sodium azide, 50% glycerol, pH7.2

Molecular Weight:

~ 69 kDa

Swiss-Prot:

Q6UWB1

Purification&Purity:

The antibody was affinity-purified from rabbit antiserum by affinity-chromatography using epitope-specific immunogen and the purity is > 95% (by SDS-PAGE).

Applications:

WB: 1:500~1:1000

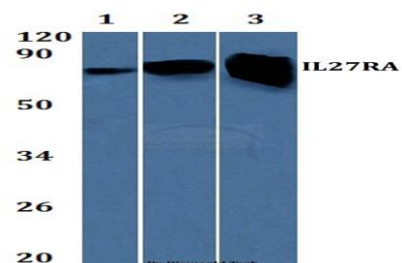
Storage&Stability:

Store at 4 °C short term. Aliquot and store at -27 °C long term. Avoid freeze-thaw cycles.

Specificity:

IL27RA polyclonal antibody detects endogenous levels of IL27RA protein.

DATA:



Western blot (WB) analysis of IL27RA polyclonal antibody at 1:500 dilution

Line1:HEPG2 whole cell lysate

Line2:Raw264.7 whole cell lysate

Line3:The Liver tissue lysate of Rat

Note:

For research use only, not for use in diagnostic procedure.

Bioworld Technology, Inc.

Add: 1660 South Highway 100, Suite 500 St. Louis Park, MN 55416, USA.

Email: info@bioworld.com

Tel: 6123263284

Fax: 6122933841

Bioworld technology, co. Ltd.

Add: No 9, weidi road Qixia District Nanjing, 210046, P. R. China.

Email: info@biogot.com

Tel: 0086-025-68037686

Fax: 0086-025-68035151