

WFS1 polyclonal antibody

Catalog: BS61338

Host: Rabbit

Reactivity: Human, Mouse, Rat

BackGround:

The Wolframin gene encodes a protein found in endoplasmic reticulum membrane of several tissues including brain, pancreas, lung and placenta. Loss-of-function mutations in both alleles result in Wolfram syndrome (also known as DIDMOAD, an autosomal recessive disorder that causes juvenile diabetes mellitus, diabetes insipidus, optic atrophy and a number of neurological symptoms including deafness, ataxia and peripheral neuropathy. A large number and variety of mutations in this gene, particularly in exon 8, can be associated with Wolfram syndrome. Mutations in this gene can also cause autosomal dominant deafness 6 (DFNA6), also known as DFNA14 or DFNA38.

Product:

Rabbit IgG, 1mg/ml in PBS with 0.02% sodium azide, 50% glycerol, pH7.2

Molecular Weight:

~ 100 kDa

Swiss-Prot:

O76024

Purification&Purity:

The antibody was affinity-purified from rabbit antiserum by affinity-chromatography using epitope-specific immunogen and the purity is > 95% (by SDS-PAGE).

Applications:

WB: 1:500~1:1000

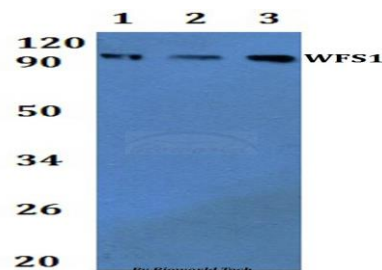
Storage&Stability:

Store at 4 °C short term. Aliquot and store at -20 °C long term. Avoid freeze-thaw cycles.

Specificity:

WFS1 polyclonal antibody detects endogenous levels of WFS1 protein.

DATA:



Western blot (WB) analysis of WFS1 polyclonal antibody at 1:500 dilution

Line1:Hela whole cell lysate

Line2:H9C2 whole cell lysate

Line3:Raw264.7 whole cell lysate

Note:

For research use only, not for use in diagnostic procedure.

Bioworld Technology, Inc.

Add: 1660 South Highway 100, Suite 500 St. Louis Park, MN 55416, USA.

Email: info@bioworld.com

Tel: 6123263284

Fax: 6122933841

Bioworld technology, co. Ltd.

Add: No 9, weidi road Qixia District Nanjing, 210046, P. R. China.

Email: info@biogot.com

Tel: 0086-025-68037686

Fax: 0086-025-68035151