

## MAPK15 polyclonal antibody

Catalog: BS61403

Host: Rabbit

Reactivity: Human, Mouse, Rat

**BackGround:**

MAPK15 (mitogen-activated protein kinase 15, ERK8) is a 544 amino acid protein that belongs to the CMGC Ser/Thr protein kinase family (MAP kinase subfamily). MAP kinases play a significant role in many biological processes, including cell adhesion and spreading, cell differentiation and apoptosis. MAPK15 functions as a catalytic kinase using ATP to produce ADP and a phosphoprotein. A TXY motif, containing one threonine and one tyrosine residue, activates the MAP kinases upon phosphorylation. MAPK15 is a ubiquitously expressed protein with highest expression found in lung and kidney.

**Product:**

Rabbit IgG, 1mg/ml in PBS with 0.02% sodium azide, 50% glycerol, pH7.2

**Molecular Weight:**

~ 59 kDa

**Swiss-Prot:**

Q8TD08

**Purification&Purity:**

The antibody was affinity-purified from rabbit antiserum by affinity-chromatography using epitope-specific immunogen and the purity is > 95% (by SDS-PAGE).

**Applications:**

WB: 1:500~1:1000

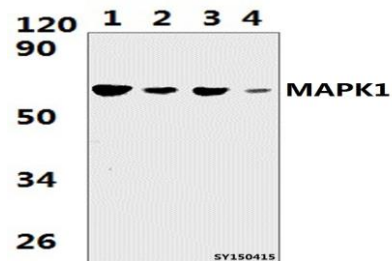
IHC: 1:50~1:200

**Storage&Stability:**

Store at 4 °C short term. Aliquot and store at -20 °C long term. Avoid freeze-thaw cycles.

**Specificity:**

MAPK15 polyclonal antibody detects endogenous levels of MAPK15 protein.

**DATA:**

Western blot (WB) analysis of MAPK15 polyclonal antibody at 1:1000 dilution

Lane1: HELA whole cell lysate (51.3 μg)

Lane2: The Lung tissue lysate of Rat (39.4 μg)

Lane3: The Lung tissue lysate of Mouse (39.4 μg)

Lane4: A549 whole cell lysate (57.6 μg)

**Note:**

For research use only, not for use in diagnostic procedure.

**Bioworld Technology, Inc.**

Add: 1660 South Highway 100, Suite 500 St. Louis Park, MN 55416, USA.

Email: [info@bioworld.com](mailto:info@bioworld.com)

Tel: 6123263284

Fax: 6122933841

**Bioworld technology, co. Ltd.**

Add: No 9, weidi road Qixia District Nanjing, 210046, P. R. China.

Email: [info@biogot.com](mailto:info@biogot.com)

Tel: 0086-025-68037686

Fax: 0086-025-68035151