

TAGAP polyclonal antibody

Catalog: BS61462

Host: Rabbit

Reactivity: Human, Mouse, Rat

BackGround:

TAGAP (T-cell activation Rho GTPase-activating protein) is a 731 amino acid protein that contains one Rho-GAP domain and exists as 4 alternatively spliced isoforms. TAGAP may function as a GTPase-activating protein and may play important roles during T-cell activation. The gene that encodes TAGAP contains approximately 10,685 bases and maps to human chromosome 6q25.3. Making up nearly 6% of the human genome, chromosome 6 contains around 1,200 genes within 170 million base pairs of sequence. Deletion of a portion of the q arm of chromosome 6 is associated with early onset intestinal cancer suggesting the presence of a cancer susceptibility locus. Porphyria cutanea tarda is associated with chromosome 6 through the HFE gene. Notably, the PARK2 gene, which is associated with Parkinson's disease, and the genes encoding the major histocompatibility complex proteins, are also located on chromosome 6. In addition, Stickler syndrome, hydroxylase deficiency and maple syrup urine disease are associated with genes on chromosome 6, while a bipolar disorder susceptibility locus has been identified on the q arm of chromosome 6.

Product:

Rabbit IgG, 1mg/ml in PBS with 0.02% sodium azide, 50% glycerol, pH7.2

Molecular Weight:

~ 82 kDa

Swiss-Prot:

Q8N103

Purification&Purity:

The antibody was affinity-purified from rabbit antiserum by affinity-chromatography using epitope-specific immunogen and the purity is > 95% (by SDS-PAGE).

Applications:

WB: 1:500~1:1000

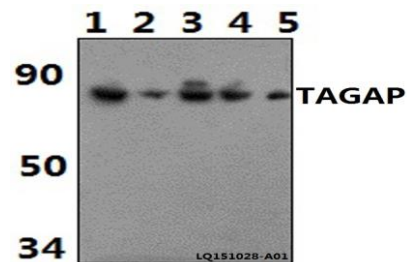
Storage&Stability:

Store at 4 °C short term. Aliquot and store at -20 °C long term. Avoid freeze-thaw cycles.

Specificity:

TAGAP polyclonal antibody detects endogenous levels of TAGAP protein.

DATA:



Western blot (WB) analysis of TAGAP polyclonal antibody at 1:500 dilution

Lane1: HeLa whole cell lysate(40ug)

Lane2: PC12 whole cell lysate(40ug)

Lane3: RAW264.7 whole cell lysate(40ug)

Lane4: MCF-7 whole cell lysate(40ug)

Lane5: H9C2 whole cell lysate(40ug)

Note:

For research use only, not for use in diagnostic procedure.

Bioworld Technology, Inc.

Add: 1660 South Highway 100, Suite 500 St. Louis Park, MN 55416, USA.

Email: info@bioworld.com

Tel: 6123263284

Fax: 6122933841

Bioworld technology, co. Ltd.

Add: No 9, weidi road Qixia District Nanjing, 210046, P. R. China.

Email: info@biogot.com

Tel: 0086-025-68037686

Fax: 0086-025-68035151