

## NAA15 polyclonal antibody

Catalog: BS61517

Host: Rabbit

Reactivity: Human, Mouse, Rat

### BackGround:

N-alpha-acetyltransferase 15, NatA auxiliary subunit also known as gastric cancer antigen Ga19 (GA19), NMDA receptor-regulated protein 1 (NARG1), and Tbdn100 is a protein that in humans is encoded by the NAA15 gene. NARG1 is the auxiliary subunit of the NatA (N-alpha-acetyltransferase A) complex. This NatA complex can associate with the ribosome and catalyzes the transfer of an acetyl group to the N-alpha-terminal amino group of proteins as they emerge from the exit tunnel.

### Product:

Rabbit IgG, 1mg/ml in PBS with 0.02% sodium azide, 50% glycerol, pH7.2

### Molecular Weight:

~ 101 kDa

### Swiss-Prot:

Q9BXJ9

### Purification&Purity:

The antibody was affinity-purified from rabbit antiserum by affinity-chromatography using epitope-specific immunogen and the purity is > 95% (by SDS-PAGE)

### Applications:

WB: 1:500~1:1000

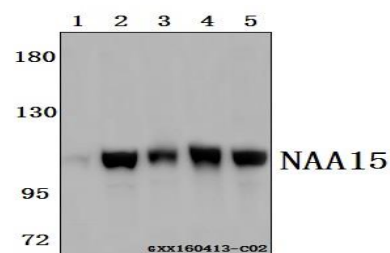
### Storage&Stability:

Store at 4 °C short term. Aliquot and store at -20 °C long term. Avoid freeze-thaw cycles.

### Specificity:

NAA15 polyclonal antibody detects endogenous levels of NAA15 protein.

### DATA:



Western blot (WB) analysis of NAA15 polyclonal antibody at 1:500 dilution

Lane1:A549 whole cell lysate(20ug)

Lane2:L02 whole cell lysate(20ug)

Lane3:The testis tissue lysate of Mouse(40ug)

Lane4:The testis tissue lysate of Rat(40ug)

### Note:

For research use only, not for use in diagnostic procedure.

### Bioworld Technology, Inc.

Add: 1660 South Highway 100, Suite 500 St. Louis Park, MN 55416, USA.

Email: [info@bioworld.com](mailto:info@bioworld.com)

Tel: 6123263284

Fax: 6122933841

### Bioworld technology, co. Ltd.

Add: No 9, weidi road Qixia District Nanjing, 210046, P. R. China.

Email: [info@biogot.com](mailto:info@biogot.com)

Tel: 0086-025-68037686

Fax: 0086-025-68035151