

MRPL11 polyclonal antibody

Catalog: BS61531

Host: Rabbit

Reactivity: Human

BackGround:

Mitochondria have their own translation machinery for production of thirteen proteins that are required for oxidative phosphorylation. MRP-L11 (39S ribosomal protein L11, mitochondrial), also known as CGI-113, is a 192 amino acid protein that is a component of the large ribosomal subunit of the mitochondria. MRP-L11 is one of the 70 protein components of mitochondrial ribosomes that are encoded by the nuclear genome. The gene encoding MRP-L11 maps to human chromosome 11, which houses over 1,400 genes and comprises nearly 4% of the human genome. Jervell and Lange-Nielsen syndrome, Jacobsen syndrome, Niemann-Pick disease, hereditary angioedema and Smith-Lemli-Opitz syndrome are associated with defects in genes that maps to chromosome 11.

Product:

Rabbit IgG, 1mg/ml in PBS with 0.02% sodium azide, 50% glycerol, pH7.2

Molecular Weight:

~ 20 kDa

Swiss-Prot:

Q9Y3B7

Purification&Purity:

The antibody was affinity-purified from rabbit antiserum by affinity-chromatography using epitope-specific immunogen and the purity is > 96% (by SDS-PAGE).

Applications:

WB: 1:500~1:1000

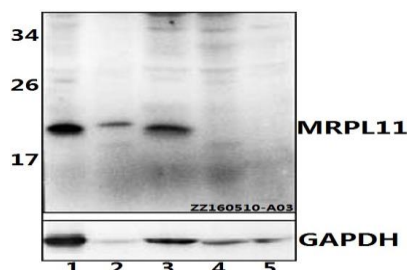
Storage&Stability:

Store at 4 °C short term. Aliquot and store at -20 °C long term. Avoid freeze-thaw cycles.

Specificity:

MRPL11 polyclonal antibody detects endogenous levels of MRPL11 protein.

DATA:



Western blot (WB) analysis of MRPL11 polyclonal antibody at 1:500 dilution

Lane1:Hct116 whole cell lysate(40ug)

Lane2:HeLa whole cell lysate(40ug)

Lane3:Jurkat whole cell lysate(40ug)

Lane4:PC12 whole cell lysate(40ug)

Lane5:SP2/0 whole cell lysate(40ug)

Note:

For research use only, not for use in diagnostic procedure.

Bioworld Technology, Inc.

Add: 1660 South Highway 100, Suite 500 St. Louis Park, MN 55416, USA.

Email: info@bioworld.com

Tel: 6123263284

Fax: 6122933841

Bioworld technology, co. Ltd.

Add: No 9, weidi road Qixia District Nanjing, 210046, P. R. China.

Email: info@biogot.com

Tel: 0086-025-68037686

Fax: 0086-025-68035151