

SLK polyclonal antibody

Catalog: BS61551

Host: Rabbit

Reactivity: Human, Mouse, Rat

BackGround:

SLK (STE20-like kinase), also known as STK2 (serine/threonine protein kinase 2) or se20-9, is a member of the serine/threonine kinase subfamily, Ste20. This subfamily is comprised of several mammalian kinases which exhibit sequence similarity to the *Saccharomyces cerevisiae* serine/threonine kinase Ste20, a protein involved in relaying signals from G protein-coupled receptors to cytosolic MAP kinase cascades. Members of this subfamily include KHS, GLK, YSK1, HPK1, Krs-1, Krs-2, GC kinase, HGK and SLK. SLK is a ubiquitously expressed protein that localizes to the cytoplasm and contains an N-terminal protein kinase domain, a central coiled-coil domain and a C-terminal ATH domain. SLK is activated through cleavage by caspase-3. SLK indirectly associates with microtubules and plays an important role in cellular stress, cell motility, cell death and cytoskeletal dynamics.

Product:

Rabbit IgG, 1mg/ml in PBS with 0.02% sodium azide, 50% glycerol, pH7.2

Molecular Weight:

~ 220 kDa

Swiss-Prot:

Q9H2G2

Purification&Purity:

The antibody was affinity-purified from rabbit antiserum by affinity-chromatography using epitope-specific immunogen and the purity is > 95% (by SDS-PAGE)

Applications:

WB: 1:500~1:1000

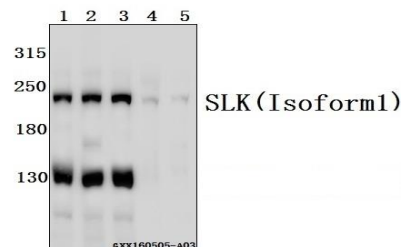
Storage&Stability:

Store at 4 °C short term. Aliquot and store at -20 °C long term. Avoid freeze-thaw cycles.

Specificity:

SLK polyclonal antibody detects endogenous levels of SLK protein.

DATA:



Western blot (WB) analysis of SLK1 polyclonal antibody at 1:500 dilution

Lane1:SK-OVCAR3 whole cell lysate(40ug)

Lane2:A549 whole cell lysate(40ug)

Lane3:PC3 whole cell lysate(40ug)

Lane4:The Heart tissue lysate of Mouse(40ug)

Lane5:The Heart tissue lysate of Rat(40ug)

Note:

For research use only, not for use in diagnostic procedure.

Bioworld Technology, Inc.

Add: 1660 South Highway 100, Suite 500 St. Louis Park, MN 55416, USA.

Email: info@bioworld.com

Tel: 6123263284

Fax: 6122933841

Bioworld technology, co. Ltd.

Add: No 9, weidi road Qixia District Nanjing, 210046, P. R. China.

Email: info@biogot.com

Tel: 0086-025-68037686

Fax: 0086-025-68035151