

SERINC2 polyclonal antibody

Catalog: BS61562

Host: Rabbit

Reactivity: Human, Mouse, Rat

BackGround:

SERINC2 (serine incorporator 2) is a 455 amino acid multi-pass membrane protein, contain 11 transmembrane segments resembling amino acid transporters. This protein is an activity-regulated protein which expressed in the brain that incorporates serine into lipids. This gene is a top-ranked risk gene for alcohol dependence in individuals of European descent.

Product:

Rabbit IgG, 1mg/ml in PBS with 0.02% sodium azide, 50% glycerol, pH7.2

Molecular Weight:

~ 50 kDa

Swiss-Prot:

Q96SA4

Purification&Purity:

The antibody was affinity-purified from rabbit antiserum by affinity-chromatography using epitope-specific immunogen and the purity is > 95% (by SDS-PAGE)

Applications:

WB: 1:500~1:1000

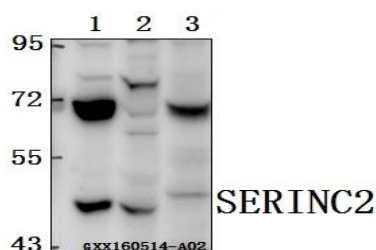
Storage&Stability:

Store at 4 °C short term. Aliquot and store at -20 °C long term. Avoid freeze-thaw cycles.

Specificity:

SERINC2 polyclonal antibody detects endogenous levels of SERINC2 protein.

DATA:



Western blot (WB) analysis of SERINC2 polyclonal antibody at 1:500 dilution

Lane1: HEK293T whole cell lysate (40ug)

Lane2: L02 whole cell lysate (40ug)

Lane3: The Kidney lysate of Rat (40ug)

Note:

For research use only, not for use in diagnostic procedure.

Bioworld Technology, Inc.

Add: 1660 South Highway 100, Suite 500 St. Louis Park, MN 55416, USA.

Email: info@bioworld.com

Tel: 6123263284

Fax: 6122933841

Bioworld technology, co. Ltd.

Add: No 9, weidi road Qixia District Nanjing, 210046, P. R. China.

Email: info@biogot.com

Tel: 0086-025-68037686

Fax: 0086-025-68035151