

PRPF19 polyclonal antibody

Catalog: BS61565

Host: Rabbit

Reactivity: Human, Mouse, Rat

BackGround:

The spliceosome, the gigantic molecular machine that performs pre-mRNA splicing in eukaryotes, contains over 200 different proteins and 5 RNA molecules (U1, U2, U4, U5 and U6). Pre-mRNA splicing is essential to remove internal non-coding regions of pre-mRNA (introns) and to join the remaining segments (exons) into mRNA before translation. The PRPF19-associated complex is required for stable association of U5 and U6 with the spliceosome after U4 is released. Changes within the spliceosome upon binding of the PRPF19-associated complex include remodeling of the U6/5' splice site interaction and destabilization of Lsm proteins to allow further interaction of U6 with the intron sequence.

Product:

Rabbit IgG, 1mg/ml in PBS with 0.02% sodium azide, 50% glycerol, pH7.2

Molecular Weight:

~ 55 kDa

Swiss-Prot:

Q9UMS4

Purification&Purity:

The antibody was affinity-purified from rabbit antiserum by affinity-chromatography using epitope-specific immunogen and the purity is > 95% (by SDS-PAGE)

Applications:

WB: 1:500~1:1000

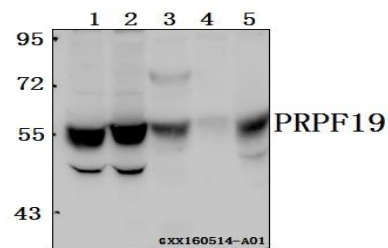
Storage&Stability:

Store at 4 °C short term. Aliquot and store at -20 °C long term. Avoid freeze-thaw cycles.

Specificity:

PRPF19 polyclonal antibody detects endogenous levels of PRPF19 protein.

DATA:



Western blot (WB) analysis of PRPF19 polyclonal antibody at 1:500 dilution

Lane1:PC3 whole cell lysate(40ug)

Lane2:HCT116 whole cell lysate(40ug)

Lane3:The Kidney lysate of Rat(40ug)

Lane4:The Heart lysate of Mouse(40ug)

Lane5:The Liver lysate of Mouse(40ug)

Note:

For research use only, not for use in diagnostic procedure.

Bioworld Technology, Inc.

Add: 1660 South Highway 100, Suite 500 St. Louis Park, MN 55416, USA.

Email: info@bioworld.com

Tel: 6123263284

Fax: 6122933841

Bioworld technology, co. Ltd.

Add: No 9, weidi road Qixia District Nanjing, 210046, P. R. China.

Email: info@biogot.com

Tel: 0086-025-68037686

Fax: 0086-025-68035151