

## EPS8L1 polyclonal antibody

Catalog: BS61588

Host: Rabbit

Reactivity: Human, Mouse, Rat

### BackGround:

Eps8L1 (EPS8-like 1), also known as DRC3 or EPS8R1, is a 723 amino acid protein that localizes to the cytoplasm and belongs to the Eps8 (epidermal growth factor receptor pathway substrate 8) family. Expressed in placental tissue, Eps8L1 functions to stimulate the guanine exchange activity of Sos 1 (son of sevenless homolog 1), a protein that promotes the exchange of Ras-bound GDP for GTP. Additionally, Eps8L1 is thought to associate with Actin and, via this association, may play a role in membrane ruffling and remodeling of the Actin cytoskeleton. Through its ability to regulate protein activation and cytoskeleton dynamics, Eps8L1 may participate in cell growth and differentiation events within the cell. Eps8L1 contains one SH3 domain and is expressed as four isoforms due to alternative splicing events.

### Product:

Rabbit IgG, 1mg/ml in PBS with 0.02% sodium azide, 50% glycerol, pH7.2

### Molecular Weight:

~ 80 kDa

### Swiss-Prot:

Q8TE68

### Purification&Purity:

The antibody was affinity-purified from rabbit antiserum by affinity-chromatography using epitope-specific immunogen and the purity is > 96% (by SDS-PAGE).

### Applications:

WB: 1:500~1:1000

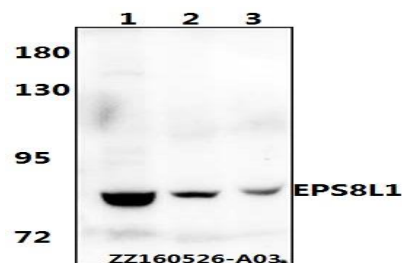
### Storage&Stability:

Store at 4 °C short term. Aliquot and store at -20 °C long term. Avoid freeze-thaw cycles.

### Specificity:

EPS8L1 polyclonal antibody detects endogenous levels of EPS8L1 protein.

### DATA:



Western blot (WB) analysis of EPS8L1 polyclonal antibody at 1:500 dilution

Lane1:HeLa whole cell lysate(40ug)

Lane2:The uterus tissue lysate of Mouse(40ug)

Lane3:The placenta tissue lysate of Rat(40ug)

### Note:

For research use only, not for use in diagnostic procedure.

### Bioworld Technology, Inc.

Add: 1660 South Highway 100, Suite 500 St. Louis Park, MN 55416, USA.

Email: [info@bioworld.com](mailto:info@bioworld.com)

Tel: 6123263284

Fax: 6122933841

### Bioworld technology, co. Ltd.

Add: No 9, weidi road Qixia District Nanjing, 210046, P. R. China.

Email: [info@biogot.com](mailto:info@biogot.com)

Tel: 0086-025-68037686

Fax: 0086-025-68035151