

PNPLA8 polyclonal antibody

Catalog: BS61600

Host: Rabbit

Reactivity: Human

BackGround:

PNPLA8 catalyzes cleavage of fatty acids from phospholipids, thereby regulating membrane physical properties and the release of lipid second messengers and growth factors. Phospholipase A2 activity also modulates cellular growth programs, inflammation, and ion channel function.

Product:

Rabbit IgG, 1mg/ml in PBS with 0.02% sodium azide, 50% glycerol, pH7.2

Molecular Weight:

~ 88 kDa

Swiss-Prot:

Q9NP80

Purification&Purity:

The antibody was affinity-purified from rabbit antiserum by affinity-chromatography using epitope-specific immunogen and the purity is > 105% (by SDS-PAGE).

Applications:

WB: 1:500~1:1000

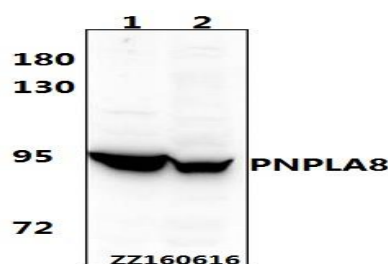
Storage&Stability:

Store at 4 °C short term. Aliquot and store at -20 °C long term. Avoid freeze-thaw cycles.

Specificity:

PNPLA8 polyclonal antibody detects endogenous levels of PNPLA8 protein.

DATA:



Western blot (WB) analysis of PNPLA8 polyclonal antibody at 1:500 dilution

Lane1:Panc1 whole cell lysate(40ug)

Lane2:L02 whole cell lysate(40ug)

Note:

For research use only, not for use in diagnostic procedure.

Bioworld Technology, Inc.

Add: 1660 South Highway 100, Suite 500 St. Louis Park, MN 55416, USA.

Email: info@bioworld.com

Tel: 6123263284

Fax: 6122933841

Bioworld technology, co. Ltd.

Add: No 9, weidi road Qixia District Nanjing, 210046, P. R. China.

Email: info@biogot.com

Tel: 0086-025-68037686

Fax: 0086-025-68035151