

## MRPL32 polyclonal antibody

Catalog: BS61602

Host: Rabbit

Reactivity: Human, Mouse, Rat

### BackGround:

Mitochondrial ribosomes consist of a large 39S subunit and a small 28S subunit, both of which are comprised of multiple mitochondrial ribosomal proteins (MRPs) that are encoded by nuclear genes and are essential for protein synthesis within mitochondria. MRP-L32 (mitochondrial ribosomal protein L32), also known as HSPC283, is a 188 amino acid protein that localizes to the mitochondrion, where it exists as a component of the 39S ribosomal subunit and works in conjunction with other MRPs to mediate protein synthesis. The gene encoding MRP-L32 maps to human chromosome 7, which houses over 1,000 genes and comprises nearly 5% of the human genome. Defects in genes localized to chromosome 7 have been linked to Osteogenesis imperfecta, Williams-Beuren syndrome, Pendred syndrome, Lissencephaly, Citrullinemia and Shwachman-Diamond syndrome.

### Product:

Rabbit IgG, 1mg/ml in PBS with 0.02% sodium azide, 50% glycerol, pH7.2

### Molecular Weight:

~ 25 kDa

### Swiss-Prot:

Q9BYC8

### Purification&Purity:

The antibody was affinity-purified from rabbit antiserum by affinity-chromatography using epitope-specific immunogen and the purity is > 107% (by SDS-PAGE).

### Applications:

WB: 1:500~1:1000

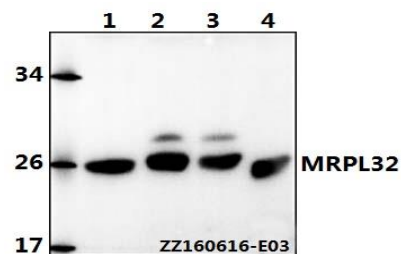
### Storage&Stability:

Store at 4 °C short term. Aliquot and store at -20 °C long term. Avoid freeze-thaw cycles.

### Specificity:

MRPL32 polyclonal antibody detects endogenous levels of MRPL32 protein.

### DATA:



Western blot (WB) analysis of MRPL32 polyclonal antibody at 1:500 dilution

Lane1:SK-OVCAR3 whole cell lysate(40ug)

Lane2:Hela whole cell lysate(40ug)

Lane3:PC12 whole cell lysate(40ug)

Lane4:BV2 whole cell lysate(40ug)

### Note:

For research use only, not for use in diagnostic procedure.

### Bioworld Technology, Inc.

Add: 1660 South Highway 100, Suite 500 St. Louis Park, MN 55416, USA.

Email: [info@bioworld.com](mailto:info@bioworld.com)

Tel: 6123263284

Fax: 6122933841

### Bioworld technology, co. Ltd.

Add: No 9, weidi road Qixia District Nanjing, 210046, P. R. China.

Email: [info@biogot.com](mailto:info@biogot.com)

Tel: 0086-025-68037686

Fax: 0086-025-68035151