

## SLC25A21 polyclonal antibody

Catalog: BS61649

Host: Rabbit

Reactivity: Human, Mouse, Rat

### BackGround:

Mitochondrial 2-oxodicarboxylate carrier, Transports C5-C7 oxodicarboxylates across the inner membranes of mitochondria. Can transport 2-oxoadipate, 2-oxoglutarate, adipate, glutarate, and to a lesser extent, pimelate, 2-oxopimelate, 2-aminoadipate, oxaloacetate, and citrate.

### Product:

Rabbit IgG, 1mg/ml in PBS with 0.02% sodium azide, 50% glycerol, pH7.2

### Molecular Weight:

~ 33 kDa

### Swiss-Prot:

Q9BQT8

### Purification&Purity:

The antibody was affinity-purified from rabbit antiserum by affinity-chromatography using epitope-specific immunogen and the purity is > 95% (by SDS-PAGE).

### Applications:

WB: 1:500~1:1000

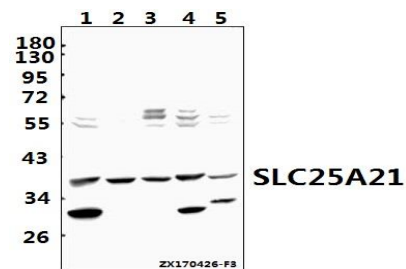
### Storage&Stability:

Store at 4 °C short term. Aliquot and store at -20 °C long term. Avoid freeze-thaw cycles.

### Specificity:

SLC25A21 polyclonal antibody detects endogenous levels of SLC25A21 protein.

### DATA:



Western blot (WB) analysis of SLC25A21 polyclonal antibody at 1:500 dilution

Lane1: HeLa whole cell lysate(40ug)

Lane2: HepG2 whole cell lysate(40ug)

Lane3: L02 whole cell lysate(40ug)

Lane4: PC12 whole cell lysate(40ug)

Lane5: AML-12 whole cell lysate(40ug)

### Note:

For research use only, not for use in diagnostic procedure.

### Bioworld Technology, Inc.

Add: 1660 South Highway 100, Suite 500 St. Louis Park, MN 55416, USA.

Email: [info@bioworld.com](mailto:info@bioworld.com)

Tel: 6123263284

Fax: 6122933841

### Bioworld technology, co. Ltd.

Add: No 9, weidi road Qixia District Nanjing, 210046, P. R. China.

Email: [info@biogol.com](mailto:info@biogol.com)

Tel: 0086-025-68037686

Fax: 0086-025-68035151