

## KCNK7 polyclonal antibody

Catalog: BS61652

Host: Rabbit

Reactivity: Human, Mouse, Rat

### BackGround:

Potassium channel subfamily K member 7, Probable potassium channel subunit. No channel activity observed in vitro as protein remains in the endoplasmic reticulum. May need to associate with an as yet unknown partner in order to reach the plasma membrane.

### Product:

Rabbit IgG, 1mg/ml in PBS with 0.02% sodium azide, 50% glycerol, pH7.2

### Molecular Weight:

~ 31 kDa

### Swiss-Prot:

Q9Y2U2

### Purification&Purity:

The antibody was affinity-purified from rabbit antiserum by affinity-chromatography using epitope-specific immunogen and the purity is > 95% (by SDS-PAGE).

### Applications:

WB: 1:500~1:1000

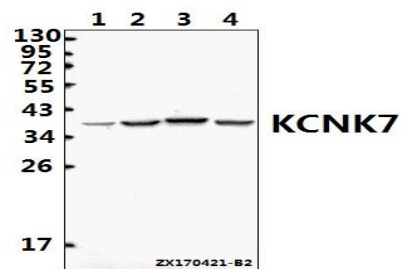
### Storage&Stability:

Store at 4 °C short term. Aliquot and store at -20 °C long term. Avoid freeze-thaw cycles.

### Specificity:

KCNK7 polyclonal antibody detects endogenous levels of KCNK7 protein.

### DATA:



Western blot (WB) analysis of KCNK7 polyclonal antibody at 1:500 dilution

Lane1:HCT116 whole cell lysate(40ug)

Lane2:A549 whole cell lysate(40ug)

Lane3:H9C2 whole cell lysate(40ug)

Lane4:AML-12 whole cell lysate(40ug)

### Note:

For research use only, not for use in diagnostic procedure.

### Bioworld Technology, Inc.

Add: 1660 South Highway 100, Suite 500 St. Louis Park, MN 55416, USA.

Email: [info@bioworld.com](mailto:info@bioworld.com)

Tel: 6123263284

Fax: 6122933841

### Bioworld technology, co. Ltd.

Add: No 9, weidi road Qixia District Nanjing, 210046, P. R. China.

Email: [info@biogot.com](mailto:info@biogot.com)

Tel: 0086-025-68037686

Fax: 0086-025-68035151