

## MED27 polyclonal antibody

Catalog: BS61659

Host: Rabbit

Reactivity: Human, Mouse, Rat

### BackGround:

In mammalian cells, transcription is regulated in part by high molecular weight coactivating complexes that mediate signals between transcriptional activators and RNA polymerase. These complexes include CRSP (for cofactor required for Sp1 activation), which is required, in conjunction with TAFIIs, for transcriptional activation by Sp1. CRSP is ubiquitously expressed in various tissues and functions as a multimeric complex that consists of nine distinct subunits. Several members of the CRSP family share sequence similarity with multiple components of the yeast transcriptional mediator proteins, including CRSP150, which is related to yeast Rgr1, and CRSP70, which is similar to the elongation factor TFIIS. CRSP77 and CRSP150 are also related to proteins within the putative murine mediator complex, while CRSP130 and CRSP34 are largely unrelated to either murine or yeast proteins. CRSP subunits also associate with larger multimeric coactivator complexes, including ARC/DRI, which binds directly to SREBP and nuclear hormone receptors to facilitate transcription, and with NAT, a polymerase II-interacting complex that represses activated transcription

### Product:

Rabbit IgG, 1mg/ml in PBS with 0.02% sodium azide, 50% glycerol, pH7.2

### Molecular Weight:

~ 35, 31 kDa

### Swiss-Prot:

Q6P2C8

### Purification&Purity:

The antibody was affinity-purified from rabbit antiserum

by affinity-chromatography using epitope-specific immunogen and the purity is > 95% (by SDS-PAGE).

### Applications:

WB: 1:500~1:1000

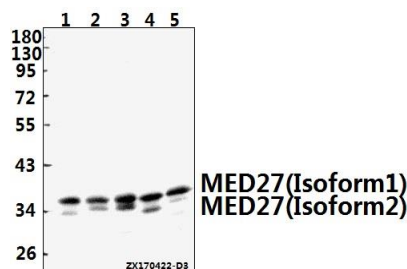
### Storage&Stability:

Store at 4 °C short term. Aliquot and store at -20 °C long term. Avoid freeze-thaw cycles.

### Specificity:

MED27 polyclonal antibody detects endogenous levels of MED27 protein.

### DATA:



Western blot (WB) analysis of MED27 polyclonal antibody at 1:500 dilution

Lane1:HeLa whole cell lysate(40ug)

Lane2:HCT116 whole cell lysate(40ug)

Lane3:A549 whole cell lysate(40ug)

Lane4:PC12 whole cell lysate(40ug)

Lane5:AML-12 whole cell lysate(40ug)

### Note:

For research use only, not for use in diagnostic procedure.

### Bioworld Technology, Inc.

Add: 1660 South Highway 100, Suite 500 St. Louis Park, MN 55416, USA.

Email: [info@bioworld.com](mailto:info@bioworld.com)

Tel: 6123263284

Fax: 6122933841

### Bioworld technology, co. Ltd.

Add: No 9, weidi road Qixia District Nanjing, 210046, P. R. China.

Email: [info@biogot.com](mailto:info@biogot.com)

Tel: 0086-025-68037686

Fax: 0086-025-68035151