

EPHA8 polyclonal antibody

Catalog: BS61672

Host: Rabbit

Reactivity: Human, Mouse, Rat

BackGround:

Ephrin type-A receptor 8 is a protein that in humans is encoded by the EPHA8 gene. This gene encodes a member of the ephrin receptor subfamily of the protein-tyrosine kinase family. EPH and EPH-related receptors have been implicated in mediating developmental events, particularly in the nervous system.

Product:

Rabbit IgG, 1mg/ml in PBS with 0.02% sodium azide, 50% glycerol, pH7.2

Molecular Weight:

~ 111 kDa

Swiss-Prot:

P29322

Purification&Purity:

The antibody was affinity-purified from rabbit antiserum by affinity-chromatography using epitope-specific immunogen and the purity is > 95% (by SDS-PAGE).

Applications:

WB: 1:500~1:1000

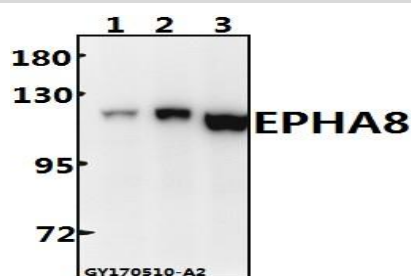
Storage&Stability:

Store at 4 °C short term. Aliquot and store at -20 °C long term. Avoid freeze-thaw cycles.

Specificity:

EPHA8 polyclonal antibody detects endogenous levels of EPHA8 protein.

DATA:



Western blot (WB) analysis of EPHA8 polyclonal antibody at 1:500 dilution

Lane1: The Heart tissue lysate of Rat(40ug)

Lane2: The Spleen tissue lysate of Mouse(40ug)

Lane3: Hela whole cell lysate(40ug)

Note:

For research use only, not for use in diagnostic procedure.

Bioworld Technology, Inc.

Add: 1660 South Highway 100, Suite 500 St. Louis Park, MN 55416, USA.

Email: info@bioworld.com

Tel: 6123263284

Fax: 6122933841

Bioworld technology, co. Ltd.

Add: No 9, weidi road Qixia District Nanjing, 210046, P. R. China.

Email: info@biogot.com

Tel: 0086-025-68037686

Fax: 0086-025-68035151