

PLK2 polyclonal antibody

Catalog: BS61702

Host: Rabbit

Reactivity: Human

BackGround:

Plks (polo-like kinases) encode serine/threonine kinases that are closely related to polo and CDC5, genes that are required for passage through mitosis in *Drosophila* and *Saccharomyces*, respectively. Polo-like kinases, which include Plk, Snk (for serum-inducible kinase, also designated Plk2) and Fnk (for FGF-inducible kinase, also designated Plk3 or PRK), play a role in cell proliferation. Plk protein accumulates in the cell during S and G2 phases of the cell cycle, and both protein content and catalytic activity peak at the onset of mitosis, followed by a rapid reduction after mitosis. Snk and Fnk are immediate-early response genes that are first expressed during G1 phase. Fnk expression peaks in late S and G2 phases, and it may play a role in regulating the onset of M phase.

Product:

1 mg/ml in Phosphate buffered saline (PBS) with 0.05% sodium azide, approx. pH 7.3.

Molecular Weight:

~ 78 kDa

Swiss-Prot:

Q9NYY3

Purification&Purity:

The antibody was affinity-purified from rabbit antiserum by affinity-chromatography using epitope-specific immunogen and the purity is > 95% (by SDS-PAGE).

Applications:

WB: 1:500~1:1000

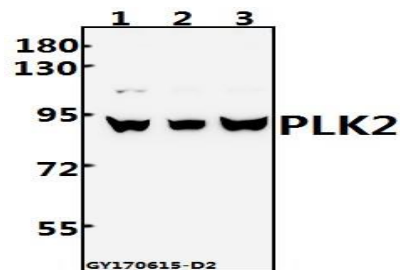
Storage&Stability:

Store at 4 °C short term. Aliquot and store at -20 °C long term. Avoid freeze-thaw cycles.

Specificity:

PLK2 polyclonal antibody detects endogenous levels of PLK2 protein.

DATA:



Western blot (WB) analysis of PLK2 polyclonal antibody at 1:500 dilution

Lane1:HEK293T whole cell lysate(40ug)

Lane2:L02 whole cell lysate(40ug)

Lane3:A549 whole cell lysate(40ug)

Note:

For research use only, not for use in diagnostic procedure.

Bioworld Technology, Inc.

Add: 1660 South Highway 100, Suite 500 St. Louis Park, MN 55416, USA.

Email: info@bioworld.com

Tel: 6123263284

Fax: 6122933841

Bioworld technology, co. Ltd.

Add: No 9, weidi road Qixia District Nanjing, 210046, P. R. China.

Email: info@biogot.com

Tel: 0086-025-68037686

Fax: 0086-025-68035151