

## POLR3B polyclonal antibody

Catalog: BS61708

Host: Rabbit

Reactivity: Human, Mouse, Rat

### BackGround:

RNA polymerase II (Pol II) is a multi-subunit complex responsible for catalyzing the transcription of DNA into RNA. POLR3B (polymerase (RNA) III (DNA directed) polypeptide B), also known as C128 or RPC2, is a 1,133 amino acid protein that localizes to the nucleus and belongs to the RNA polymerase  $\beta$  chain family. Existing as the second largest component of the multi-protein RNA polymerase III (Pol III) complex, POLR3B functions as a DNA-dependent RNA polymerase that specifically catalyzes the transcription of DNA into RNA using ribonucleoside triphosphates as substrates. The gene encoding POLR3B maps to human chromosome 12, which encodes over 1,100 genes and comprises approximately 4.5% of the human genome. Chromosome 12 is associated with a variety of diseases and afflictions, including hypochondrogenesis, achondrogenesis, Kniest dysplasia, Noonan syndrome and Trisomy 12p, which causes facial developmental defects and seizure disorders.

### Product:

Rabbit IgG, 1mg/ml in PBS with 0.02% sodium azide, 50% glycerol, pH7.2

### Molecular Weight:

~ 127 kDa

### Swiss-Prot:

Q9NW08

### Purification&Purity:

The antibody was affinity-purified from rabbit antiserum by affinity-chromatography using epitope-specific immunogen and the purity is > 95% (by SDS-PAGE).

### Applications:

WB: 1:500~1:1000

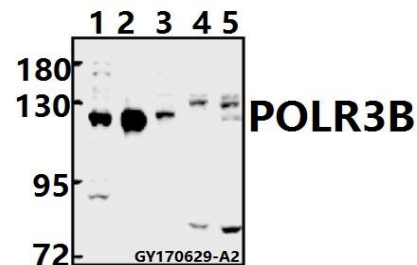
### Storage&Stability:

Store at 4 °C short term. Aliquot and store at -20 °C long term. Avoid freeze-thaw cycles.

### Specificity:

POLR3B polyclonal antibody detects endogenous levels of POLR3B protein.

### DATA:



Western blot (WB) analysis of POLR3B polyclonal antibody at 1:500 dilution

Lane1:CT26 whole cell lysate(20ug)

Lane2:H9C2 whole cell lysate(20ug)

Lane3:U-87MG whole cell lysate(40ug)

Lane4:HCT116 whole cell lysate(40ug)

Lane5:MCF-7 whole cell lysate(40ug)

### Note:

For research use only, not for use in diagnostic procedure.

### Bioworld Technology, Inc.

Add: 1660 South Highway 100, Suite 500 St. Louis Park, MN 55416, USA.

Email: [info@bioworld.com](mailto:info@bioworld.com)

Tel: 6123263284

Fax: 6122933841

### Bioworld technology, co. Ltd.

Add: No 9, weidi road Qixia District Nanjing, 210046, P. R. China.

Email: [info@biogot.com](mailto:info@biogot.com)

Tel: 0086-025-68037686

Fax: 0086-025-68035151