

EPN3 polyclonal antibody

Catalog: BS61710

Host: Rabbit

Reactivity: Human, Mouse, Rat

BackGround:

EPN3 belongs to the epsin family. It is detected in migrating keratinocytes from wounded skin, but not in differentiating keratinocytes or in normal skin. It is detected in chronic wounds, basal cell carcinoma and ulcerative colitis.

Product:

1 mg/ml in Phosphate buffered saline (PBS) with 0.05% sodium azide, approx. pH 7.3.

Molecular Weight:

~ 80 kDa

Swiss-Prot:

Q9H201

Purification&Purity:

The antibody was affinity-purified from rabbit antiserum by affinity-chromatography using epitope-specific immunogen and the purity is > 95% (by SDS-PAGE).

Applications:

WB: 1:500~1:1000

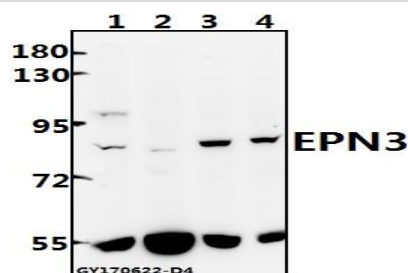
Storage&Stability:

Store at 4 °C short term. Aliquot and store at -20 °C long term. Avoid freeze-thaw cycles.

Specificity:

EPN3 polyclonal antibody detects endogenous levels of EPN3 protein.

DATA:



Western blot (WB) analysis of EPN3 polyclonal antibody at 1:500 dilution

Lane1:MCF-7 whole cell lysate(40ug)

Lane2:A549 whole cell lysate(40ug)

Lane3:H9C2 whole cell lysate(40ug)

Lane4:AML-12 whole cell lysate(40ug)

Note:

For research use only, not for use in diagnostic procedure.

Bioworld Technology, Inc.

Add: 1660 South Highway 100, Suite 500 St. Louis Park, MN 55416, USA.

Email: info@bioworld.com

Tel: 6123263284

Fax: 6122933841

Bioworld technology, co. Ltd.

Add: No 9, weidi road Qixia District Nanjing, 210046, P. R. China.

Email: info@biogot.com

Tel: 0086-025-68037686

Fax: 0086-025-68035151