

FTH1 polyclonal antibody

Catalog: BS61757

Host: Rabbit

Reactivity: Human, Mouse, Rat

BackGround:

Ferritin (FTH) is a ubiquitous and highly conserved protein which plays a major role in iron homeostasis by sequestering and storing iron in a non-toxic and bioavailable form. The assembled ferritin molecule, often referred to as a nanocage, can store up to 4,500 atoms of iron. It forms a holoenzyme of ~450 kDa, consisting of 24 subunits made up of two types of polypeptide chains: ferritin heavy chain and ferritin light chain, each having unique functions. Ferritin heavy chains catalyze the first step in iron storage, the oxidation of Fe(II), whereas ferritin light chains promote the nucleation of ferrihydrite, enabling storage of Fe(III). In addition to iron buffering, heavy chain ferritin also enhances thymidine biosynthesis. Serum ferritin levels serve as an indicator of the amount of iron stored in the body. Serum ferritin is the most sensitive test for anaemia. The level of serum ferritin is markedly elevated in inflammation, malignancy, and iron overload disorders. Research studies have found that defects in ferritin proteins are also associated with several neurodegenerative diseases.

Product:

Rabbit IgG, 1mg/ml in PBS with 0.02% sodium azide, 50% glycerol, pH7.2

Molecular Weight:

~ 21 kDa

Swiss-Prot:

P02794

Purification&Purity:

The antibody was affinity-purified from rabbit antiserum by affinity-chromatography using epitope-specific immunogen and the purity is > 95% (by SDS-PAGE).

Applications:

WB: 1:500~1:1000

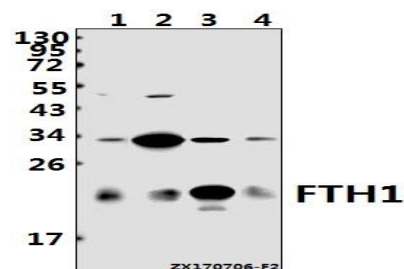
Storage&Stability:

Store at 4 °C short term. Aliquot and store at -20 °C long term. Avoid freeze-thaw cycles.

Specificity:

FTH1 polyclonal antibody detects endogenous levels of FTH1 protein.

DATA:



Western blot (WB) analysis of FTH1 polyclonal antibody at 1:1000 dilution

Lane1:L02 whole cell lysate(10ug)

Lane2:C6 whole cell lysate(40ug)

Lane3:MEF whole cell lysate(20ug)

Lane4:U-87MG whole cell lysate(10ug)

Note:

For research use only, not for use in diagnostic procedure.

Bioworld Technology, Inc.

Add: 1660 South Highway 100, Suite 500 St. Louis Park, MN 55416, USA.

Email: info@bioworld.com

Tel: 6123263284

Fax: 6122933841

Bioworld technology, co. Ltd.

Add: No 9, weidi road Qixia District Nanjing, 210046, P. R. China.

Email: info@biogot.com

Tel: 0086-025-68037686

Fax: 0086-025-68035151