

PINK1 polyclonal antibody

Catalog: BS61826

Host: Rabbit

Reactivity: Human

BackGround:

PTEN induced putative kinase 1, PINK1, is a mitochondrial serine/threonine kinase involved in the normal function and integrity of mitochondria, as well as in reduction of cytochrome c release from mitochondria. PINK1 phosphorylates Parkin and promotes its translocation to mitochondria. Research studies have shown that mutations in PINK1 are linked to autosomal recessive early onset Parkinson's disease, and are associated with loss of protective function, mitochondrial dysfunction, aggregation of α -synuclein, as well as proteasome dysfunction.

Product:

Rabbit IgG, 1mg/ml in PBS with 0.02% sodium azide, 50% glycerol, pH7.2

Molecular Weight:

~ 50 kDa

Swiss-Prot:

Q9BXM7

Purification&Purity:

The antibody was affinity-purified from rabbit antiserum by affinity-chromatography using epitope-specific immunogen and the purity is > 95% (by SDS-PAGE).

Applications:

WB: 1:500~1:2000

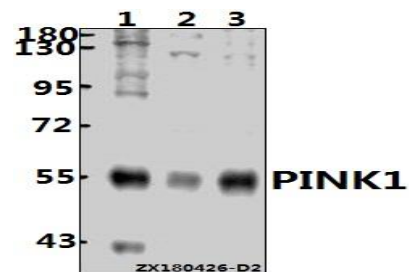
Storage&Stability:

Store at 4 °C short term. Aliquot and store at -20 °C long term. Avoid freeze-thaw cycles.

Specificity:

PINK1 pAb detects endogenous levels of PINK1 protein.

DATA:



Western blot (WB) analysis of PINK1 pAb at 1:2000 dilution

Lane1:L02 whole cell lysate(40ug)

Lane2:A2780 whole cell lysate(40ug)

Lane3:MCF-7 whole cell lysate(40ug)

Note:

For research use only, not for use in diagnostic procedure.

Bioworld Technology, Inc.

Add: 1660 South Highway 100, Suite 500 St. Louis Park, MN 55416, USA.

Email: info@bioworld.com

Tel: 6123263284

Fax: 6122933841

Bioworld technology, co. Ltd.

Add: No 9, weidi road Qixia District Nanjing, 210046, P. R. China.

Email: info@biogot.com

Tel: 0086-025-68037686

Fax: 0086-025-68035151