

BLZF1 polyclonal antibody

Catalog: BS6311

Host: Rabbit

Reactivity: Human, Mouse, Rat

BackGround:

Golgin 45, also known as JEM-1 or Basic Leucine Zipper Nuclear Factor 1, is a 400 amino acid protein that localizes to the lumen of the golgi apparatus. The primary function of golgin 45 is to maintain normal golgi structure and to facilitate protein transport from the endoplasmic reticulum to the cell surface. The latter process is regulated primarily through the interaction of golgin 45 and GRASP55, which, together, form a Rab 2 effector complex. Excluding formation of a Rab 2 complex, golgin 45 does not interact with any other golgi Rab proteins. Golgin 45 is expressed as two isoforms, one of which localizes to the nucleus and is thought to function as a transcription factor.

Product:

Rabbit IgG, 1mg/ml in PBS with 0.02% sodium azide, 50% glycerol, pH7.2

Molecular Weight:

~ 45 kDa

Swiss-Prot:

Q9H2G9

Purification&Purity:

The antibody was affinity-purified from rabbit antiserum by affinity-chromatography using epitope-specific im-

munogen and the purity is > 95% (by SDS-PAGE).

Applications:

WB: 1:500~1:2000

IHC/IF: 1:50~1:200

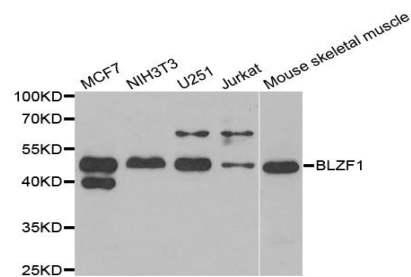
Storage&Stability:

Store at 4 °C short term. Aliquot and store at -20 °C long term. Avoid freeze-thaw cycles.

Specificity:

BLZF1 polyclonal antibody detects endogenous levels of BLZF1 protein.

DATA:



Western blot analysis of BLZF1 polyclonal antibody

Note:

For research use only, not for use in diagnostic procedure.

Bioworld Technology, Inc.

Add: 1660 South Highway 100, Suite 500 St. Louis Park, MN 55416, USA.

Email: info@bioworld.com

Tel: 6123263284

Fax: 6122933841

Bioworld technology, co. Ltd.

Add: No 9, weidi road Qixia District Nanjing, 210046, P. R. China.

Email: info@biogot.com

Tel: 0086-025-68037686

Fax: 0086-025-68035151