

## IL18BP polyclonal antibody

Catalog: BS6312

Host: Rabbit

Reactivity: Human, Mouse

### Background:

IL-18 (also referred to as IL-1 $\gamma$ ) has been shown to augment the secretion of IFN- $\gamma$  from T lymphocytes and to increase NK cell activity in spleen cells. IL-18 exhibits 19% and 12% identity with IL-1 $\alpha$  and IL-1 $\beta$ , respectively, over the twelve  $\beta$ -strands of the  $\beta$ -trefoil fold domain, which is a signature feature of the IL-1 family. The unusual leader sequence of IL-18 may be analogous to the IL-1 $\beta$  pro-domain, which must be cleaved by the serine protease ICE for optimal secretion and biological activity. IL-18, which was originally described as IGIF (IFN- $\gamma$ -inducing factor), IL-18 is induced in mouse liver subsequent to challenge with lipopolysaccharide (LPS). IL-18 binding protein (IL-18BP) functions as an inhibitor of the early Th1 response by binding to IL-18 and inhibiting IFN- $\gamma$  production. IL-18BP is a member of the immunoglobulin superfamily and shares some homology to IL-1RII.

### Product:

Rabbit IgG, 1mg/ml in PBS with 0.02% sodium azide, 50% glycerol, pH7.2

### Molecular Weight:

~ 38 kDa

### Swiss-Prot:

O95998

### Purification&Purity:

The antibody was affinity-purified from rabbit antiserum by affinity-chromatography using epitope-specific immunogen and the purity is > 95% (by SDS-PAGE).

### Applications:

WB: 1:500~1:2000

IHC/IF: 1:50~1:200

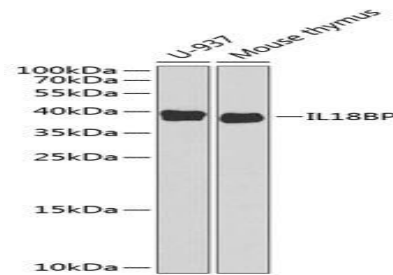
### Storage&Stability:

Store at 4 °C short term. Aliquot and store at -20 °C long term. Avoid freeze-thaw cycles.

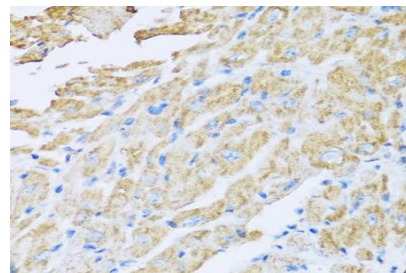
### Specificity:

IL18BP polyclonal antibody detects endogenous levels of IL18BP protein.

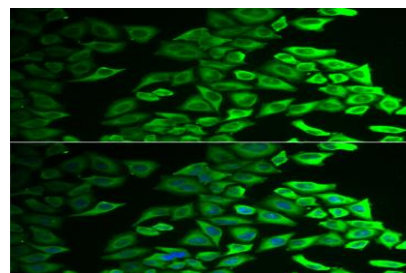
### DATA:



Western blot analysis of extracts of various cell lines, using IL18BP antibody.



Immunohistochemistry of paraffin-embedded mouse heart using IL18BP antibody at dilution of 1:100 (40x lens).



Immunofluorescence analysis of A549 cell using IL18BP antibody.

Blue: DAPI for nuclear staining.

### Note:

For research use only, not for use in diagnostic procedure.

### Bioworld Technology, Inc.

Add: 1660 South Highway 100, Suite 500 St. Louis Park, MN 55416, USA.

Email: [info@bioworld.com](mailto:info@bioworld.com)

Tel: 6123263284

Fax: 6122933841

### Bioworld technology, co. Ltd.

Add: No 9, weidi road Qixia District Nanjing, 210046, P. R. China.

Email: [info@biogot.com](mailto:info@biogot.com)

Tel: 0086-025-68037686

Fax: 0086-025-68035151



## PRODUCT DATA SHEET

Bioworld Technology, Inc.

---

---

### **Bioworld Technology, Inc.**

**Add:** 1660 South Highway 100, Suite 500 St. Louis Park,  
MN 55416, USA.

**Email:** [info@bioworld.com](mailto:info@bioworld.com)

**Tel:** 6123263284

**Fax:** 6122933841

### **Bioworld technology, co. Ltd.**

**Add:** No 9, weidi road Qixia District Nanjing, 210046,  
P. R. China.

**Email:** [info@biogot.com](mailto:info@biogot.com)

**Tel:** 0086-025-68037686

**Fax:** 0086-025-68035151