

## KLF13 (Acetyl-K166) polyclonal antibody

Catalog: BS64091

Host: Rabbit

Reactivity: Human, Mouse, Rat

### BackGround:

KLF13 belongs to a family of transcription factors that contain 3 classical zinc finger DNA-binding domains consisting of a zinc atom tetrahedrally coordinated by 2 cysteines and 2 histidines (C2H2 motif). These transcription factors bind to GC-rich sequences and related GT and CACCC boxes.

### Product:

Rabbit IgG, 1mg/ml in PBS with 0.02% sodium azide, 50% glycerol, pH7.2

### Molecular Weight:

~ 31 kDa

### Swiss-Prot:

Q9Y2Y9

### Purification&Purity:

The antibody was affinity-purified from rabbit antiserum by affinity-chromatography using epitope-specific immunogen and the purity is > 96% (by SDS-PAGE).

### Applications:

WB: 1:500~1:1000

### Storage&Stability:

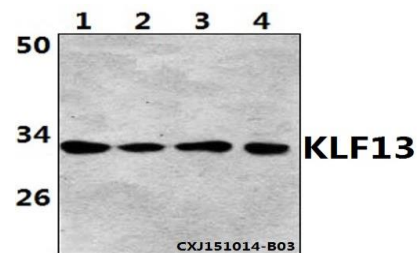
Store at 4 °C short term. Aliquot and store at -20 °C long

term. Avoid freeze-thaw cycles.

### Specificity:

KLF13 (Acetyl-K166) polyclonal antibody detects endogenous levels of KLF13 protein when Acetyl at K166.

### DATA:



Western blot (WB) analysis of KLF13 (Acetyl-K166) polyclonal antibody at 1:500 dilution

Lane1: HeLa whole cell lysate (40ug)

Lane2: Jurkat whole cell lysate (40ug)

Lane3: NIH-3T3 whole cell lysate (40ug)

Lane4: PC12 whole cell lysate (40ug)

### Note:

For research use only, not for use in diagnostic procedure.

### Bioworld Technology, Inc.

Add: 1660 South Highway 100, Suite 500 St. Louis Park, MN 55416, USA.

Email: [info@bioworld.com](mailto:info@bioworld.com)

Tel: 6123263284

Fax: 6122933841

### Bioworld technology, co. Ltd.

Add: No 9, weidi road Qixia District Nanjing, 210046, P. R. China.

Email: [info@biogot.com](mailto:info@biogot.com)

Tel: 0086-025-68037686

Fax: 0086-025-68035151