

## PLD4 polyclonal antibody

Catalog: BS65243

Host: Rabbit

Reactivity: Human

### BackGround:

catalytic activity:A phosphatidylcholine + H<sub>2</sub>O = choline + a phosphatidate.,similarity:Belongs to the phospholipase D family.,similarity:Contains 2 PLD phosphodiesterase domains.,

### Product:

Liquid in PBS containing 50% glycerol, 0.5% BSA and 0.02% sodium azide.

### Molecular Weight:

~ 55 kDa

### Swiss-Prot:

Q96BZ4

### Purification&Purity:

The antibody was affinity-purified from rabbit antiserum by affinity-chromatography using epitope-specific immunogen.

### Applications:

WB 1:500-2000, ELISA 1:10000-20000

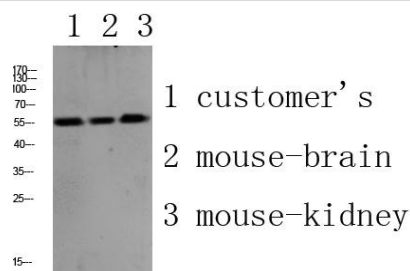
### Storage&Stability:

Store at 4 °C short term. Aliquot and store at -20 °C long term. Avoid freeze-thaw cycles.

### Specificity:

This antibody detects endogenous levels of PLD4.

### DATA:



Western blot analysis of various lysate, antibody was diluted at 1000.

Secondary antibody(catalog#: RS0002) was diluted at 1:20000

### Note:

For

### Bioworld Technology, Inc.

Add: 1660 South Highway 100, Suite 500 St. Louis Park, MN 55416, USA.

Email: [info@bioworld.com](mailto:info@bioworld.com)

Tel: 6123263284

Fax: 6122933841

### Bioworld technology, co. Ltd.

Add: No 9, weidi road Qixia District Nanjing, 210046, P. R. China.

Email: [info@biogot.com](mailto:info@biogot.com)

Tel: 0086-025-68037686

Fax: 0086-025-68035151