

CBR1 polyclonal antibody

Catalog: BS65247

Host: Rabbit

Reactivity: Human

Background:

carbonyl reductase 1(CBR1) Homo sapiens The protein encoded by this gene belongs to the short-chain dehydrogenases/reductases (SDR) family, which function as NADPH-dependent oxidoreductases having wide specificity for carbonyl compounds, such as quinones, prostaglandins, and various xenobiotics. Alternatively spliced transcript variants have been found for this gene. [provided by RefSeq, Nov 2013],

Product:

Liquid in PBS containing 50% glycerol, 0.5% BSA and 0.02% sodium azide.

Molecular Weight:

~ 32 kDa

Swiss-Prot:

P16152

Purification&Purity:

The antibody was affinity-purified from rabbit antiserum by affinity-chromatography using epitope-specific immunogen.

Applications:

Western Blot: 1/500 - 1/2000. Immunohistochemistry: 1/100 - 1/300. ELISA: 1/40000. Not yet tested in other applications.

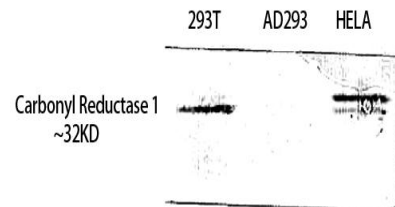
Storage&Stability:

Store at 4 °C short term. Aliquot and store at -20 °C long term. Avoid freeze-thaw cycles.

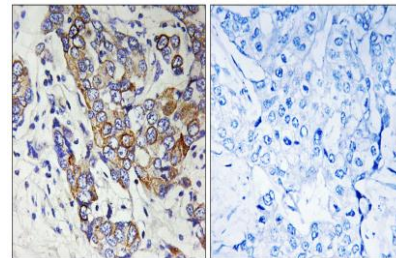
Specificity:

Carbonyl Reductase 1 Polyclonal Antibody detects endogenous levels of Carbonyl Reductase 1 protein.

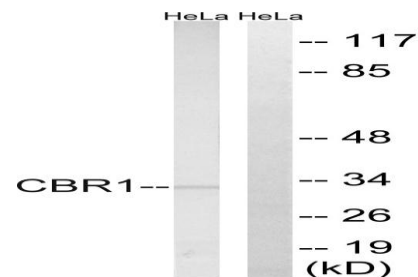
DATA:



Western Blot analysis of 293T HELA using Carbonyl Reductase 1 Polyclonal Antibody. Antibody was diluted at 1:1000



Immunohistochemistry analysis of paraffin-embedded human breast carcinoma tissue, using CBR1 Antibody. The picture on the right is blocked with the synthesized peptide.



Western blot analysis of lysates from HeLa cells, using CBR1 Antibody. The lane on the right is blocked with the synthesized peptide.

Note:

For

Bioworld Technology, Inc.

Add: 1660 South Highway 100, Suite 500 St. Louis Park, MN 55416, USA.

Email: info@bioworld.com

Tel: 6123263284

Fax: 6122933841

Bioworld technology, co. Ltd.

Add: No 9, weidi road Qixia District Nanjing, 210046, P. R. China.

Email: info@biogot.com

Tel: 0086-025-68037686

Fax: 0086-025-68035151