

## RAB11FIP2 polyclonal antibody

Catalog: BS65265

Host: Rabbit

Reactivity: Human, Mouse

### Background:

function: A Rab11 effector protein acting in the regulation of the transport of vesicles from the endosomal recycling compartment (ERC) to the plasma membrane. Also involved in receptor-mediated endocytosis and membrane trafficking of recycling endosomes, probably originating from clathrin-coated vesicles. Binds preferentially to phosphatidylinositol 3,4,5-trisphosphate (PtdInsP3) and phosphatidic acid (PA)., similarity: Contains 1 C2 domain., subcellular location: Translocates with RAB11A from the vesicles of the endocytic recycling compartment (ERC) to the plasma membrane., subunit: Homooligomerizes in a Rab11-independent manner. Forms an heterooligomeric complex with RAB11FIP4. Interacts with AP2A1, MYO5B, RAB11A, RAB11B, RAB25 and REPS1. Interacts with RAB11A/RAB11B that has been activated by GTP binding.

### Product:

Liquid in PBS containing 50% glycerol, 0.5% BSA and 0.02% sodium azide.

### Molecular Weight:

~ 58 kDa

### Swiss-Prot:

Q7L804

### Purification&Purity:

The antibody was affinity-purified from rabbit antiserum by affinity-chromatography using epitope-specific immunogen.

### Applications:

Western Blot: 1/500 - 1/2000. ELISA: 1/10000. Not yet tested in other applications.

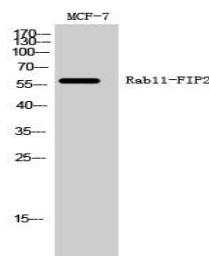
### Storage&Stability:

Store at 4 °C short term. Aliquot and store at -20 °C long term. Avoid freeze-thaw cycles.

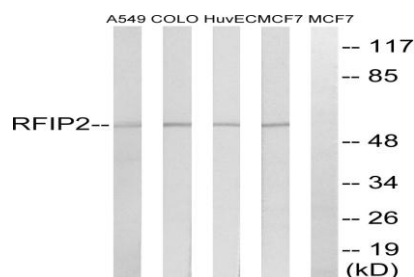
### Specificity:

Rab11-FIP2 Polyclonal Antibody detects endogenous levels of Rab11-FIP2 protein.

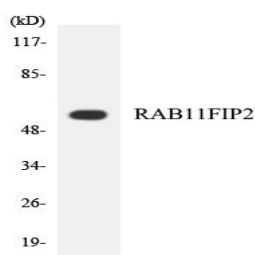
### DATA:



Western Blot analysis of MCF-7 cells using Rab11-FIP2 Polyclonal Antibody



Western blot analysis of lysates from MCF-7, HUVEC, A549, and COLO cells, using RAB11FIP2 Antibody. The lane on the right is blocked with the synthesized peptide.



Western blot analysis of the lysates from HepG2 cells using RAB11FIP2 antibody.

### Note:

For research use only, not for use in diagnostic procedure.

### Bioworld Technology, Inc.

Add: 1660 South Highway 100, Suite 500 St. Louis Park, MN 55416, USA.

Email: [info@bioworld.com](mailto:info@bioworld.com)

Tel: 6123263284

Fax: 6122933841

### Bioworld technology, co. Ltd.

Add: No 9, weidi road Qixia District Nanjing, 210046, P. R. China.

Email: [info@biogot.com](mailto:info@biogot.com)

Tel: 0086-025-68037686

Fax: 0086-025-68035151



## PRODUCT DATA SHEET

Bioworld Technology, Inc.

---

---

### **Bioworld Technology, Inc.**

**Add:** 1660 South Highway 100, Suite 500 St. Louis Park,  
MN 55416, USA.

**Email:** [info@bioworld.com](mailto:info@bioworld.com)

**Tel:** 6123263284

**Fax:** 6122933841

### **Bioworld technology, co. Ltd.**

**Add:** No 9, weidi road Qixia District Nanjing, 210046,  
P. R. China.

**Email:** [info@biogot.com](mailto:info@biogot.com)

**Tel:** 0086-025-68037686

**Fax:** 0086-025-68035151