

CXB7 polyclonal antibody

Catalog: BS65285

Host: Rabbit

Reactivity: Human

BackGround:

gap junction protein beta 7(GJB7) Homo sapiens Connexins, such as GJB7, are involved in the formation of gap junctions, intercellular conduits that directly connect the cytoplasm of contacting cells. Each gap junction channel is formed by docking of 2 hemichannels, each of which contains 6 connexin subunits (Sohl et al., 2003 [PubMed 12881038]).[supplied by OMIM, Mar 2008]

Product:

Liquid in PBS containing 50% glycerol, 0.5% BSA and 0.02% sodium azide.

Molecular Weight:

~ 24 kDa

Swiss-Prot:

Q6PEY0

Purification&Purity:

The antibody was affinity-purified from rabbit antiserum by affinity-chromatography using epitope-specific immunogen.

Applications:

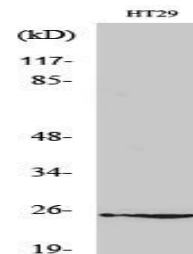
Western Blot: 1/500 - 1/2000. ELISA: 1/10000. Not yet tested in other applications.

Storage&Stability:

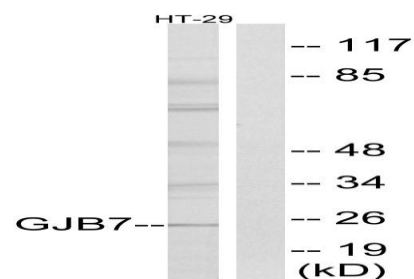
Store at 4 °C short term. Aliquot and store at -20 °C long term. Avoid freeze-thaw cycles.

Specificity:

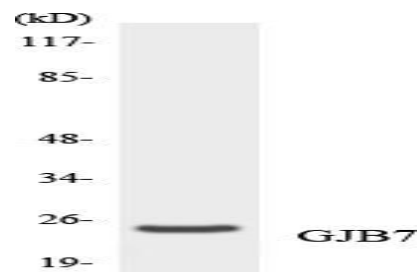
Connexin 25 Polyclonal Antibody detects endogenous levels of Connexin 25 protein.

DATA:

Western Blot analysis of various cells using Connexin 25 Polyclonal Antibody diluted at 1: 500



Western blot analysis of lysates from HT-29 cells, using GJB7 Antibody. The lane on the right is blocked with the synthesized peptide.



Western blot analysis of the lysates from HeLa cells using GJB7 antibody.

Note:

For research use only, not for use in diagnostic procedure.

Bioworld Technology, Inc.

Add: 1660 South Highway 100, Suite 500 St. Louis Park, MN 55416, USA.

Email: info@bioworld.com

Tel: 6123263284

Fax: 6122933841

Bioworld technology, co. Ltd.

Add: No 9, weidi road Qixia District Nanjing, 210046, P. R. China.

Email: info@biogot.com

Tel: 0086-025-68037686

Fax: 0086-025-68035151