

ZC3H11A polyclonal antibody

Catalog: BS65300

Host: Rabbit

Reactivity: Human, Monkey

BackGround:

PTM: Phosphorylated upon DNA damage, probably by ATM or ATR., sequence caution: Contaminating sequence. Potential poly-A sequence., similarity: Contains 3 C3H1-type zinc fingers.

Product:

Liquid in PBS containing 50% glycerol, 0.5% BSA and 0.02% sodium azide.

Molecular Weight:

~ 85 kDa

Swiss-Prot:

O75152

Purification&Purity:

The antibody was affinity-purified from rabbit antiserum by affinity-chromatography using epitope-specific immunogen.

Applications:

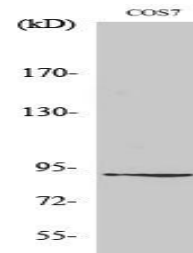
Western Blot: 1/500 - 1/2000. ELISA: 1/20000. Not yet tested in other applications.

Storage&Stability:

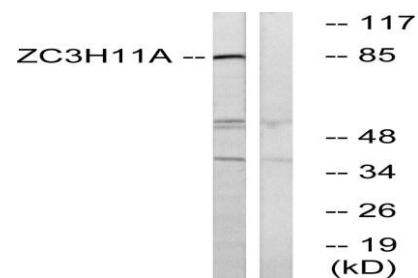
Store at 4 °C short term. Aliquot and store at -20 °C long term. Avoid freeze-thaw cycles.

Specificity:

ZC3H11A Polyclonal Antibody detects endogenous levels of ZC3H11A protein.

DATA:

Western Blot analysis of various cells using ZC3H11A Polyclonal Antibody diluted at 1: 1000. Secondary antibody (catalog#: RS0002) was diluted at 1:20000



Western blot analysis of lysates from COS cells, using ZC3H11A Antibody. The lane on the right is blocked with the synthesized peptide.

Note:

For research use only, not for use in diagnostic procedure.

Bioworld Technology, Inc.

Add: 1660 South Highway 100, Suite 500 St. Louis Park, MN 55416, USA.

Email: info@bioworld.com

Tel: 6123263284

Fax: 6122933841

Bioworld technology, co. Ltd.

Add: No 9, weidi road Qixia District Nanjing, 210046, P. R. China.

Email: info@biogot.com

Tel: 0086-025-68037686

Fax: 0086-025-68035151