

## SGCA polyclonal antibody

Catalog: BS65305

Host: Rabbit

Reactivity: Human, Mouse

### BackGround:

sarcoglycan alpha(SGCA) Homo sapiens This gene encodes a component of the dystrophin-glycoprotein complex (DGC), which is critical to the stability of muscle fiber membranes and to the linking of the actin cytoskeleton to the extracellular matrix. Its expression is thought to be restricted to striated muscle. Mutations in this gene result in type 2D autosomal recessive limb-girdle muscular dystrophy. Multiple transcript variants encoding different isoforms have been found for this gene. [provided by RefSeq, Oct 2008].

### Product:

Liquid in PBS containing 50% glycerol, 0.5% BSA and 0.02% sodium azide.

### Molecular Weight:

~ 43 kDa

### Swiss-Prot:

Q16586

### Purification&Purity:

The antibody was affinity-purified from rabbit antiserum by affinity-chromatography using epitope-specific immunogen.

### Applications:

Western Blot: 1/500 - 1/2000. ELISA: 1/40000. Not yet

tested in other applications.

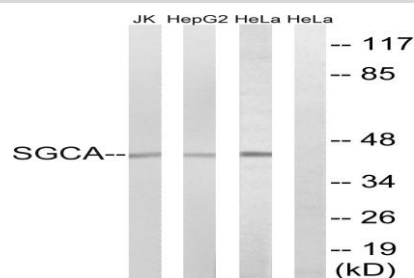
### Storage&Stability:

Store at 4 °C short term. Aliquot and store at -20 °C long term. Avoid freeze-thaw cycles.

### Specificity:

Sarcoglycan  $\alpha$  Polyclonal Antibody detects endogenous levels of Sarcoglycan  $\alpha$  protein.

### DATA:



Western blot analysis of lysates from HeLa, HepG2, and Jurkat cells, using SGCA Antibody. The lane on the right is blocked with the synthesized peptide.

### Note:

For research use only, not for use in diagnostic procedure.

### Bioworld Technology, Inc.

Add: 1660 South Highway 100, Suite 500 St. Louis Park, MN 55416, USA.

Email: [info@bioworld.com](mailto:info@bioworld.com)

Tel: 6123263284

Fax: 6122933841

### Bioworld technology, co. Ltd.

Add: No 9, weidi road Qixia District Nanjing, 210046, P. R. China.

Email: [info@biogot.com](mailto:info@biogot.com)

Tel: 0086-025-68037686

Fax: 0086-025-68035151