

## C1s polyclonal antibody

Catalog: BS65309

Host: Rabbit

Reactivity: Human

### BackGround:

complement C1s(C1S) Homo sapiens This gene encodes a serine protease, which is a major constituent of the human complement subcomponent C1. C1s associates with two other complement components C1r and C1q in order to yield the first component of the serum complement system. Defects in this gene are the cause of selective C1s deficiency. [provided by RefSeq, Mar 2009],

### Product:

Liquid in PBS containing 50% glycerol, 0.5% BSA and 0.02% sodium azide.

### Molecular Weight:

~ 77 kDa

### Swiss-Prot:

P09871

### Purification&Purity:

The antibody was affinity-purified from rabbit antiserum by affinity-chromatography using epitope-specific immunogen.

### Applications:

Western Blot: 1/500 - 1/2000. Immunohistochemistry: 1/100 - 1/300. ELISA: 1/40000. Not yet tested in other applications.

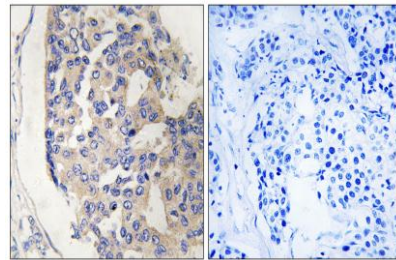
### Storage&Stability:

Store at 4 °C short term. Aliquot and store at -20 °C long term. Avoid freeze-thaw cycles.

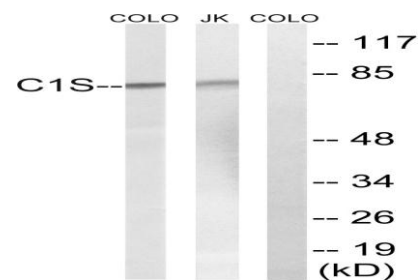
### Specificity:

C1s Polyclonal Antibody detects endogenous levels of C1s protein.

### DATA:



Immunohistochemistry analysis of paraffin-embedded human breast carcinoma tissue, using C1S Antibody. The picture on the right is blocked with the synthesized peptide.



Western blot analysis of lysates from Jurkat and COLO cells, using C1S Antibody. The lane on the right is blocked with the synthesized peptide.

### Note:

For research use only, not for use in diagnostic procedure.

### Bioworld Technology, Inc.

Add: 1660 South Highway 100, Suite 500 St. Louis Park, MN 55416, USA.

Email: [info@bioworld.com](mailto:info@bioworld.com)

Tel: 6123263284

Fax: 6122933841

### Bioworld technology, co. Ltd.

Add: No 9, weidi road Qixia District Nanjing, 210046, P. R. China.

Email: [info@biogot.com](mailto:info@biogot.com)

Tel: 0086-025-68037686

Fax: 0086-025-68035151