

MRP-L14 Polyclonal Antibody

Catalog: BS65339

Host: Rabbit

Reactivity: Human, Mouse, Rat

BackGround:

mitochondrial ribosomal protein L14(MRPL14) Homo sapiens This nuclear gene encodes a protein component of the 39S subunit of the mitochondrial ribosome. A pseudogene of this gene is found on chromosome 17. [provided by RefSeq, Jan 2016],

Product:

Liquid in PBS containing 50% glycerol, 0.5% BSA and 0.02% sodium azide.

Molecular Weight:

~16 kDa

Swiss-Prot:

Q6P1L8

Purification&Purity:

The antibody was affinity-purified from rabbit antiserum by affinity-chromatography using epitope-specific immunogen.

Applications:

Western Blot: 1/500 - 1/2000. Immunohistochemistry: 1/100 - 1/300. ELISA: 1/20000. Not yet tested in other applications.

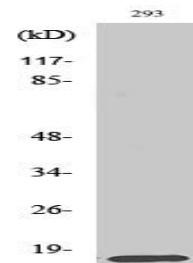
Storage&Stability:

Store at 4 °C short term. Aliquot and store at -20 °C long term. Avoid freeze-thaw cycles.

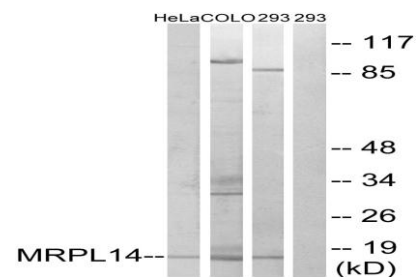
Specificity:

MRP-L14 Polyclonal Antibody detects endogenous levels of MRP-L14 protein.

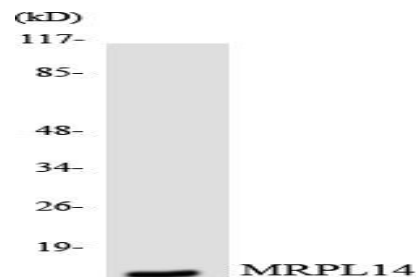
DATA:



Western Blot analysis of various cells using MRP-L14 Polyclonal Antibody diluted at 1: 2000



Western blot analysis of lysates from 293, HeLa, and COLO cells, using MRP-L14 Antibody. The lane on the right is blocked with the synthesized peptide.



Western blot analysis of the lysates from HUVEC cells using MRP-L14 antibody.

Note:

For research use only, not for use in diagnostic procedure.

Bioworld Technology, Inc.

Add: 1660 South Highway 100, Suite 500 St. Louis Park, MN 55416, USA.

Email: info@bioworld.com

Tel: 6123263284

Fax: 6122933841

Bioworld technology, co. Ltd.

Add: No 9, weidi road Qixia District Nanjing, 210046, P. R. China.

Email: info@biogot.com

Tel: 0086-025-68037686

Fax: 0086-025-68035151