

## Tau(Ab-534/217) polyclonal antibody

Catalog: BS65349

Host: Rabbit

Reactivity: Human, Mouse, Rat

### Background:

microtubule associated protein tau(MAPT) Homo sapiens  
This gene encodes the microtubule-associated protein tau (MAPT) whose transcript undergoes complex, regulated alternative splicing, giving rise to several mRNA species. MAPT transcripts are differentially expressed in the nervous system, depending on stage of neuronal maturation and neuron type. MAPT gene mutations have been associated with several neurodegenerative disorders such as Alzheimer's disease, Pick's disease, frontotemporal dementia, cortico-basal degeneration and progressive supranuclear palsy. [provided by RefSeq, Jul 2008],

### Product:

Liquid in PBS containing 50% glycerol, 0.5% BSA and 0.02% sodium azide.

### Molecular Weight:

~50-85kDa

### Swiss-Prot:

P10636

### Purification&Purity:

The antibody was affinity-purified from rabbit antiserum by affinity-chromatography using epitope-specific immunogen.

### Applications:

Western Blot: 1/500 - 1/2000. Immunohistochemistry:

1/100 - 1/300. ELISA: 1/5000. Not yet tested in other applications.

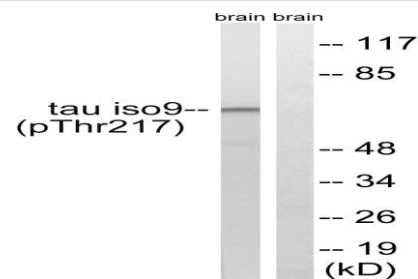
### Storage&Stability:

Store at 4 °C short term. Aliquot and store at -20 °C long term. Avoid freeze-thaw cycles.

### Specificity:

Phospho-Tau (T534) Polyclonal Antibody detects endogenous levels of Tau protein only when phosphorylated at T534.

### DATA:



Western blot analysis of lysates from rat brain, using Tau (Phospho-Thr534/217) Antibody. The lane on the right is blocked with the phospho peptide.

### Note:

For research use only, not for use in diagnostic procedure.

### Bioworld Technology, Inc.

Add: 1660 South Highway 100, Suite 500 St. Louis Park, MN 55416, USA.

Email: [info@bioworld.com](mailto:info@bioworld.com)

Tel: 6123263284

Fax: 6122933841

### Bioworld technology, co. Ltd.

Add: No 9, weidi road Qixia District Nanjing, 210046, P. R. China.

Email: [info@biogot.com](mailto:info@biogot.com)

Tel: 0086-025-68037686

Fax: 0086-025-68035151