

## ABHD14A Polyclonal Antibody

Catalog: BS65357

Host: Rabbit

Reactivity: Human, Mouse, Rat

### BackGround:

caution: It is uncertain whether Met-1 or Met-30 is the initiator., function: Possible role in granule neuron development., similarity: Belongs to the AB hydrolase superfamily. ABHD14 family.,

### Product:

Liquid in PBS containing 50% glycerol, 0.5% BSA and 0.02% sodium azide.

### Molecular Weight:

~30 kDa

### Swiss-Prot:

Q9BUJ0

### Purification&Purity:

The antibody was affinity-purified from rabbit antiserum by affinity-chromatography using epitope-specific immunogen.

### Applications:

Western Blot: 1/500 - 1/2000. ELISA: 1/40000. Not yet tested in other applications.

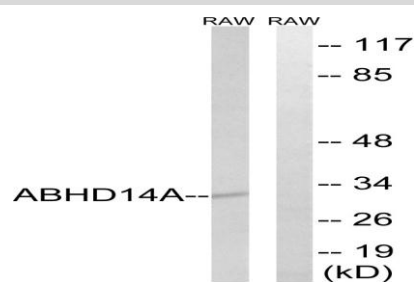
### Storage&Stability:

Store at 4 °C short term. Aliquot and store at -20 °C long term. Avoid freeze-thaw cycles.

### Specificity:

ABHD14A Polyclonal Antibody detects endogenous levels of ABHD14A protein.

### DATA:



Western blot analysis of lysates from RAW264.7 cells, using ABHD14A Antibody. The lane on the right is blocked with the synthesized peptide.

### Note:

For research use only, not for use in diagnostic procedure.

### Bioworld Technology, Inc.

Add: 1660 South Highway 100, Suite 500 St. Louis Park, MN 55416, USA.

Email: [info@bioworld.com](mailto:info@bioworld.com)

Tel: 6123263284

Fax: 6122933841

### Bioworld technology, co. Ltd.

Add: No 9, weidi road Qixia District Nanjing, 210046, P. R. China.

Email: [info@biogot.com](mailto:info@biogot.com)

Tel: 0086-025-68037686

Fax: 0086-025-68035151