

SORCS2 Polyclonal Antibody

Catalog: BS65710

Host: Rabbit

Reactivity: Human, Mouse, Rat,

BackGround:

There are three SorCS genes that have diverse, partially overlapping functions in the central nervous system. In the developing and mature central nervous system, SorCS1, SorCS2 and SorCS3 genes are expressed in a combinatorial, non-overlapping pattern. SorCS proteins show homology to the mosaic receptor SorLA and the neurotensin receptor sortilin, based on a common VPS10 domain, which is the hallmark of the SorCS receptor family. SorCS2 (sortilin-related VPS10 domain containing receptor 2) is a 1,150 amino acid single-pass type I membrane protein that is highly expressed in brain and kidney. Containing six BNR repeats and a single PKD domain, SorCS2 is encoded by a gene that maps to human chromosome 4, which encodes nearly 6% of the human genome and has the largest gene deserts (regions of the genome with no protein encoding genes) of all of the human chromosomes.

Product:

0.01M TBS(pH7.4) with 1% BSA, 0.03% Proclin300 and 50% Glycerol.

Molecular Weight:

123kDa

Swiss-Prot:

Q96PQ0

Purification&Purity:

affinity purified by Protein A

Applications:

WB=1:500-2000

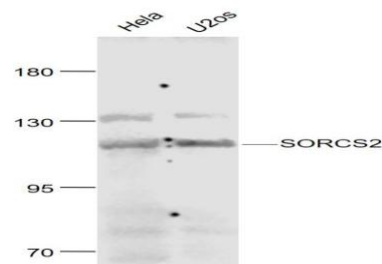
Storage&Stability:

Store at 4 °C short term. Aliquot and store at -20 °C long term. Avoid freeze-thaw cycles.

Specificity:

SORCS2 Polyclonal Antibody detects endogenous levels of SORCS2 protein.

DATA:



Primary: Anti- SORCS2 at 1/1000 dilution

Note:

For research use only, not for use in diagnostic procedure.

Bioworld Technology, Inc.

Add: 1660 South Highway 100, Suite 500 St. Louis Park, MN 55416, USA.

Email: info@bioworld.com

Tel: 6123263284

Fax: 6122933841

Bioworld technology, co. Ltd.

Add: No 9, weidi road Qixia District Nanjing, 210046, P. R. China.

Email: info@biogot.com

Tel: 0086-025-68037686

Fax: 0086-025-68035151