

IFT46 Polyclonal Antibody

Catalog: BS65787

Host: Rabbit

Reactivity: Human,

BackGround:

IFT46 is a 304 amino acid protein that belongs to the IFT46 family. IFT46 localizes to the cilium basal body but can also be found along the length of the cilium and is a part of a complex involved in intraflagellar transport (IFT). In addition, IFT46 is involved in the bi-directional movement of particles that is required for the assembly, maintenance, and functionality of primary cilia. Furthermore, IFT46 may be involved in skeletogenesis and chondrocyte maturation. Two isoforms exist due to alternate splicing events and the gene encoding IFT46 maps to human chromosome 11. Chromosome 11 houses over 1,400 genes and comprises nearly 4% of the human genome. Jervell and Lange-Nielsen syndrome, Jacobsen syndrome, Niemann-Pick disease, hereditary angioedema and Smith-Lemli-Opitz syndrome are associated with defects in genes that maps to chromosome 11.

Product:

0.01M TBS(pH7.4) with 1% BSA, 0.03% Proclin300 and 50% Glycerol.

Molecular Weight:

34 kD

Swiss-Prot:

Q9NQC8

Purification&Purity:

affinity purified by Protein A

Applications:

WB=1:500-2000

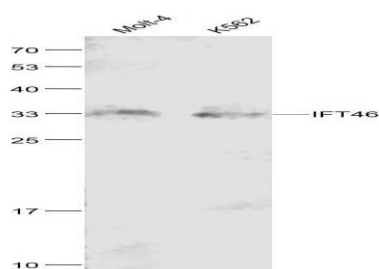
Storage&Stability:

Store at 4 °C short term. Aliquot and store at -20 °C long term. Avoid freeze-thaw cycles.

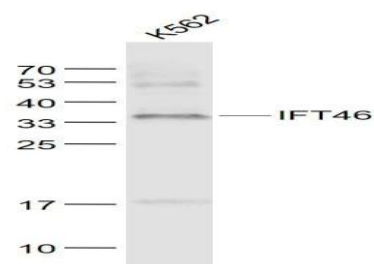
Specificity:

IFT46 Polyclonal Antibody detects endogenous levels of IFT46 protein.

DATA:



Primary: Anti-IFT46 at 1/1000 dilution



Primary: Anti- IFT46 at 1/1000 dilution

Note:

For research use only, not for use in diagnostic procedure.

Bioworld Technology, Inc.

Add: 1660 South Highway 100, Suite 500 St. Louis Park, MN 55416, USA.

Email: info@bioworld.com

Tel: 6123263284

Fax: 6122933841

Bioworld technology, co. Ltd.

Add: No 9, weidi road Qixia District Nanjing, 210046, P. R. China.

Email: info@biogot.com

Tel: 0086-025-68037686

Fax: 0086-025-68035151