

KIF2A Polyclonal Antibody

Catalog: BS65792 Host: Rabbit Reactivity: Human, Mouse, Rat, Chicken, Dog, Pig, Cow, Horse, Sheep

Background:

The protein encoded by this gene is a plus end-directed motor required for normal mitotic progression. The encoded protein is required for normal spindle activity during mitosis and is necessary for normal brain development. Several transcript variants encoding different isoforms have been found for this gene.

Product:

0.01M TBS(pH7.4) with 1% BSA, 0.03% Proclin300 and 50% Glycerol.

Molecular Weight:

80kDa

Swiss-Prot:

O00139

Purification&Purity:

affinity purified by Protein A

Applications:

IHC-P=1:100-500

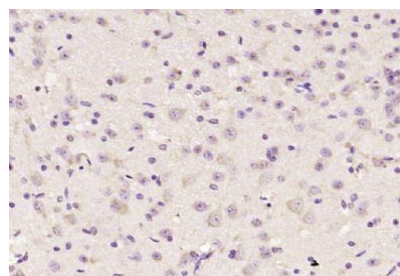
Storage&Stability:

Store at 4 °C short term. Aliquot and store at -20 °C long term. Avoid freeze-thaw cycles.

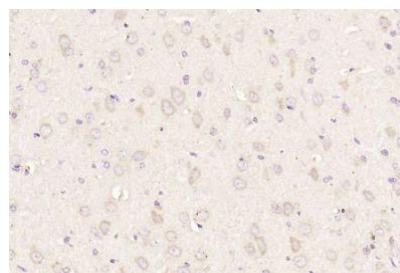
Specificity:

KIF2A Polyclonal Antibody detects endogenous levels of KIF2A protein.

DATA:



Paraformaldehyde-fixed, paraffin embedded (mouse brain); Antigen retrieval by boiling in sodium citrate buffer (pH6.0) for 15min; Block endogenous peroxidase by 3% hydrogen peroxide for 20 minutes; Blocking buffer (normal goat serum) at 37 °C for 30min; Antibody incubation with (KIF2A) Polyclonal Antibody, Unconjugated at 1:200 overnight at 4 °C



Paraformaldehyde-fixed, paraffin embedded (rat brain); Antigen retrieval by boiling in sodium citrate buffer (pH6.0) for 15min; Block endogenous peroxidase by 3% hydrogen peroxide for 20 minutes; Blocking buffer (normal goat serum) at 37 °C for 30min; Antibody incubation with (KIF2A) Polyclonal Antibody, Unconjugated at 1:200 overnight at 4 °C

Note:

For research use only, not for use in diagnostic procedure.

Bioworld Technology, Inc.

Add: 1660 South Highway 100, Suite 500 St. Louis Park, MN 55416, USA.

Email: info@bioworld.com

Tel: 6123263284

Fax: 6122933841

Bioworld technology, co. Ltd.

Add: No 9, weidi road Qixia District Nanjing, 210046, P. R. China.

Email: info@biogot.com

Tel: 0086-025-68037686

Fax: 0086-025-68035151