

TEFF1 Polyclonal Antibody

Catalog: BS65795 Host: Rabbit Reactivity: Hu-man, Mouse, Rat, Chicken, Dog, Pig, Cow, Horse, Rabbit, Sheep,

BackGround:

This locus represents naturally occurring read-through transcription from the neighboring MSANTD3 (Myb/SANT-like DNA-binding domain containing 3) and TMEFF1 (transmembrane protein with EGF-like and two follistatin-like domains 1) genes. The read-through transcript encodes a fusion protein that shares sequence identity with the products of each individual gene.聽

Product:

0.01M TBS(pH7.4) with 1% BSA, 0.03% Proclin300 and 50% Glycerol.

Molecular Weight:

37 kD

Swiss-Prot:

Q8IYR6

Purification&Purity:

affinity purified by Protein A

Applications:

WB=1:500-2000

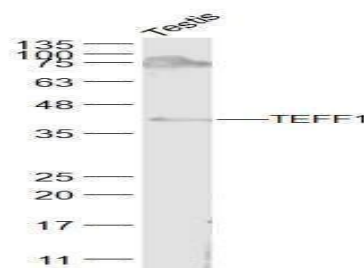
Storage&Stability:

Store at 4 °C short term. Aliquot and store at -20 °C long term. Avoid freeze-thaw cycles.

Specificity:

TEFF1 Polyclonal Antibody detects endogenous levels of TEFF1 protein.

DATA:



Primary: Anti-TEFF1 at 1/300 dilution

Note:

For research use only, not for use in diagnostic procedure.

Bioworld Technology, Inc.

Add: 1660 South Highway 100, Suite 500 St. Louis Park, MN 55416, USA.

Email: info@bioworld.com

Tel: 6123263284

Fax: 6122933841

Bioworld technology, co. Ltd.

Add: No 9, weidi road Qixia District Nanjing, 210046, P. R. China.

Email: info@biogot.com

Tel: 0086-025-68037686

Fax: 0086-025-68035151