

GPR55 Polyclonal Antibody

Catalog: BS65984 Host: Rabbit Reactivity: Hu-
man, Mouse, Rat, Chicken, Dog, Horse, Rabbit,

Background:

G protein-coupled receptors (GPCRs, or GPRs) contain 7 transmembrane domains and transduce extracellular signals through heterotrimeric G proteins. GPCR GPR55 is a member of this family (subfamily Orphan-A). It has been reported to be expressed in the brain, where mRNA transcripts were detected in the caudate nucleus and putamen, but not detected in the hippocampus, thalamus, pons cerebellum, frontal cortex of the brain. ESTs have been isolated from liver/spleen libraries.

Product:

0.01M TBS(pH7.4) with 1% BSA, 0.03% Proclin300 and 50% Glycerol.

Molecular Weight:

35 ~37kD

Swiss-Prot:

Q9Y2T6

Purification&Purity:

affinity purified by Protein A

Applications:

WB=1:500-2000

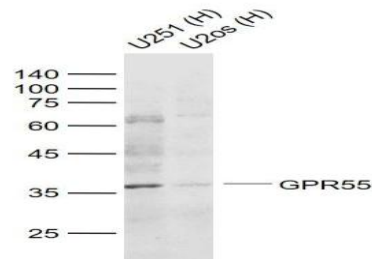
Storage&Stability:

Store at 4 °C short term. Aliquot and store at -20 °C long term. Avoid freeze-thaw cycles.

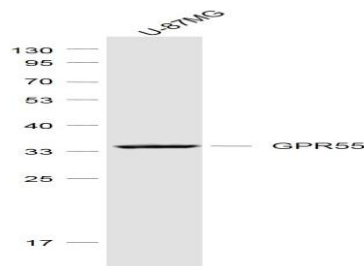
Specificity:

GPR55 Polyclonal Antibody detects endogenous levels of GPR55 protein.

DATA:



Primary: Anti-GPR55 at 1/1000 dilution



Primary: Anti-GPR55 at 1/1000 dilution

Primary: Anti- GPR55 at 1/300 dilution

Note:

For research use only, not for use in diagnostic procedure.

Bioworld Technology, Inc.

Add: 1660 South Highway 100, Suite 500 St. Louis Park, MN 55416, USA.

Email: info@bioworld.com

Tel: 6123263284

Fax: 6122933841

Bioworld technology, co. Ltd.

Add: No 9, weidi road Qixia District Nanjing, 210046, P. R. China.

Email: info@biogot.com

Tel: 0086-025-68037686

Fax: 0086-025-68035151