

## SMC6 Polyclonal Antibody

Catalog: BS65989      Host: Rabbit      Reactivity: Hu-  
man, Mouse, Rat, Dog, Pig, Cow, Horse, Rabbit, Sheep,

### Background:

SMC5/6 complex is recruited to nuclease induced double strand breaks (DSBs) and is required for the recruitment of cohesin to DSBs. The human SMC5/6 complex and the SUMO ligase activity of hMMS21 are required for the prevention of DNA damage induced apoptosis by facilitating DNA repair in human cells.

### Product:

0.01M TBS (pH7.4) with 1% BSA, 0.03% Proclin300 and 50% Glycerol.

### Molecular Weight:

126 kDa

### Swiss-Prot:

Q96SB8

### Purification&Purity:

affinity purified by Protein A

### Applications:

IHC-P=1:100-500

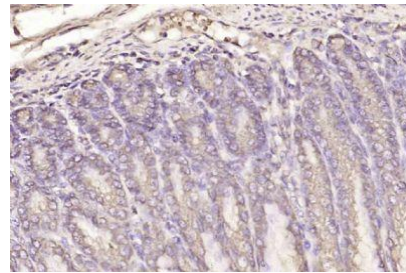
### Storage&Stability:

Store at 4 °C short term. Aliquot and store at -20 °C long term. Avoid freeze-thaw cycles.

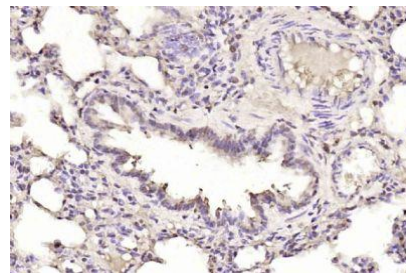
### Specificity:

SMC6 Polyclonal Antibody detects endogenous levels of SMC6 protein.

### DATA:



Paraformaldehyde-fixed, paraffin embedded (rat stomach); Antigen retrieval by boiling in sodium citrate buffer (pH6.0) for 15min; Block endogenous peroxidase by 3% hydrogen peroxide for 20 minutes; Blocking buffer (normal goat serum) at 37 °C for 30min; Antibody incubation with (SMC6) Polyclonal Antibody, Unconjugated at 1:200 overnight at 4 °C,



Paraformaldehyde-fixed, paraffin embedded (rat lung); Antigen retrieval by boiling in sodium citrate buffer (pH6.0) for 15min; Block endogenous peroxidase by 3% hydrogen peroxide for 20 minutes; Blocking buffer (normal goat serum) at 37 °C for 30min; Antibody incubation with (SMC6) Polyclonal Antibody, Unconjugated at 1:200 overnight at 4 °C

### Note:

For research use only, not for use in diagnostic procedure.

### Bioworld Technology, Inc.

Add: 1660 South Highway 100, Suite 500 St. Louis Park, MN 55416, USA.

Email: [info@bioworld.com](mailto:info@bioworld.com)

Tel: 6123263284

Fax: 6122933841

### Bioworld technology, co. Ltd.

Add: No 9, weidi road Qixia District Nanjing, 210046, P. R. China.

Email: [info@biogot.com](mailto:info@biogot.com)

Tel: 0086-025-68037686

Fax: 0086-025-68035151