

## PDE4D polyclonal antibody

Catalog: BS6687

Host: Rabbit

Reactivity: Human, Mouse, Rat

### BackGround:

Phosphodiesterases (PDE) hydrolyze cAMP to 5'AMP and thus play a critical role in the regulation of intracellular cAMP. Division of the PDE superfamily by sequence homology and enzymatic properties yields 11 PDE families. A unique upstream conserved region (UCR) characterizes the PDE4 family. Four separate genes (A-D) encode the PDE4 enzymes, and alternative splicing generates short or long isoforms of each gene. Long PDE4 isoforms contain both UCR1 and UCR2 while short PDE4 isoforms possess only UCR2. Both UCR domains are necessary for dimerization of PDE4 isoforms. The human PDE4D gene maps to chromosome 5q11.2. The splice variants include isoforms PDE4D1-6.

### Product:

Rabbit IgG, 1mg/ml in PBS with 0.02% sodium azide, 50% glycerol, pH7.2

### Molecular Weight:

~ 91, 105 kDa

### Swiss-Prot:

Q08499

### Purification&Purity:

The antibody was affinity-purified from rabbit antiserum by affinity-chromatography using epitope-specific immunogen and the purity is > 95% (by SDS-PAGE).

### Applications:

WB 1:500 - 1:2000

IHC 1:50 - 1:200

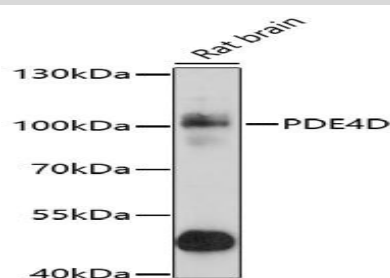
### Storage&Stability:

Store at 4 °C short term. Aliquot and store at -20 °C long term. Avoid freeze-thaw cycles.

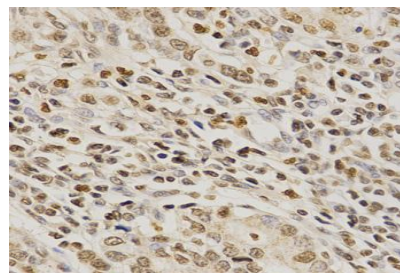
### Specificity:

PDE4D polyclonal antibody detects endogenous levels of PDE4D protein.

### DATA:



Western blot analysis of PDE4D polyclonal antibody



Immunohistochemistry (IHC) analysis of PDE4D polyclonal antibody in paraffin-embedded Human Stomach Cancer tissue.

### Note:

For research use only, not for use in diagnostic procedure.

### Bioworld Technology, Inc.

Add: 1660 South Highway 100, Suite 500 St. Louis Park, MN 55416, USA.

Email: [info@bioworld.com](mailto:info@bioworld.com)

Tel: 6123263284

Fax: 6122933841

### Bioworld technology, co. Ltd.

Add: No 9, weidi road Qixia District Nanjing, 210046, P. R. China.

Email: [info@biogot.com](mailto:info@biogot.com)

Tel: 0086-025-68037686

Fax: 0086-025-68035151