

XPA polyclonal antibody

Catalog: BS6766

Host: Rabbit

Reactivity: Human, Mouse

Background:

The XPA gene encodes a 31 kDa zinc metalloprotein that preferentially binds to DNA damaged by UV radiation and chemical carcinogens and is required for the incision step during nucleotide excision repair. The XPB and XPD genes encode DNA helicases involved in several DNA metabolic pathways, including DNA repair and transcription, and the XPG gene product is an endonuclease that cuts on the 3' side of a DNA lesion during nucleotide excision repair. Molecular defects in the XP variant (XPV) group maintain normal excision repair, yet they result in a substantial reduction in the ability to synthesize intact daughter DNA strands during DNA replication following DNA damage.

Product:

Rabbit IgG, 1mg/ml in PBS with 0.02% sodium azide, 50% glycerol, pH7.2

Molecular Weight:

~ 37 kDa

Swiss-Prot:

P23025

Purification&Purity:

The antibody was affinity-purified from rabbit antiserum by affinity-chromatography using epitope-specific immunogen and the purity is > 95% (by SDS-PAGE).

Applications:

WB 1:500 - 1:2000

IF 1:50 - 1:100

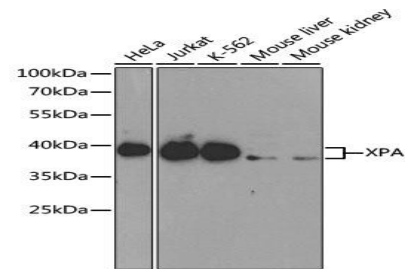
Storage&Stability:

Store at 4 °C short term. Aliquot and store at -20 °C long term. Avoid freeze-thaw cycles.

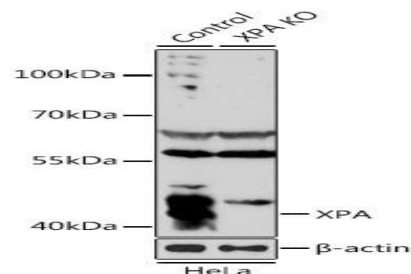
Specificity:

XPA polyclonal antibody detects endogenous levels of XPA protein.

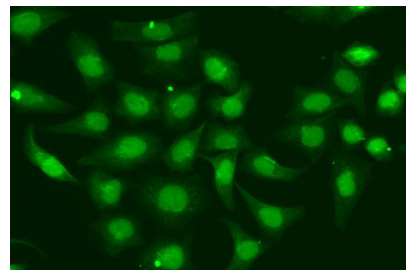
DATA:



Western blot analysis of XPA polyclonal antibody



Western blot analysis of extracts from normal (control) and XPA knockout (KO) HeLa cells, using XPA antibody.



Immunofluorescence analysis of GFP-RNF168 transgenic U2OS cells using XPA antibody.

Note:

For research use only, not for use in diagnostic procedure.

Bioworld Technology, Inc.

Add: 1660 South Highway 100, Suite 500 St. Louis Park, MN 55416, USA.

Email: info@bioworld.com

Tel: 6123263284

Fax: 6122933841

Bioworld technology, co. Ltd.

Add: No 9, weidi road Qixia District Nanjing, 210046, P. R. China.

Email: info@biogot.com

Tel: 0086-025-68037686

Fax: 0086-025-68035151