

IL10 polyclonal antibody

Catalog: BS6920

Host: Rabbit

Reactivity: Human, Mouse, Rat

BackGround:

IL-10 is an anti-inflammatory cytokine that is produced by T cells, NK cells and macrophages. IL-10 initiates signal transduction by binding to a cell surface receptor complex consisting of IL-10 RI and IL-10 RII. Binding of IL-10 leads to the activation of Jak1 and Tyk2, which phosphorylates Stat-3. The anti-inflammatory activity of IL-10 is due to its ability to block signaling through other cytokine receptors, notably IFN γ receptor, by upregulating expression of SOCS-1. In addition, IL-10 promotes T cell tolerance by inhibiting tyrosine phosphorylation of CD28. IL-10 is an important negative regulator of the immune response, which allows for maintenance of pregnancy. In contrast, increased IL-10 levels contribute to persistent *Leishmania major* infections.

Product:

1 mg/ml in Phosphate buffered saline (PBS) with 0.05% sodium azide, approx. pH 7.2.

Molecular Weight:

~ 20 kDa

Swiss-Prot:

P22301

Purification&Purity:

The antibody was affinity-purified from rabbit antiserum by affinity-chromatography using epitope-specific immunogen and the purity is > 95% (by SDS-PAGE).

Applications:

WB: 1:500~1:2000

IHC: 1:50~1:200

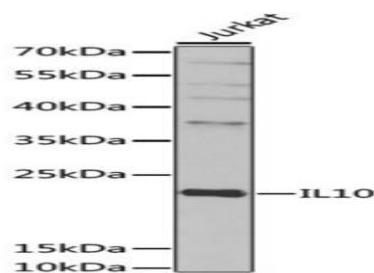
Storage&Stability:

Store at 4 °C short term. Aliquot and store at -20 °C long term. Avoid freeze-thaw cycles.

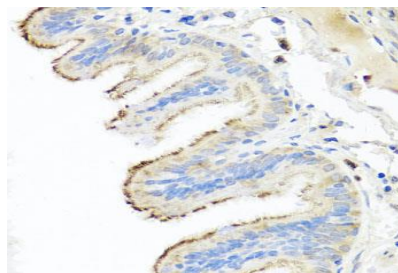
Specificity:

IL10 polyclonal antibody detects endogenous levels of IL10 protein.

DATA:



Western blot analysis of IL10 polyclonal antibody



Immunohistochemistry of paraffin-embedded human trachea using IL10 antibody at dilution of 1:100.

Note:

For research use only, not for use in diagnostic procedure.

Bioworld Technology, Inc.

Add: 1660 South Highway 100, Suite 500 St. Louis Park, MN 55416, USA.

Email: info@bioworld.com

Tel: 6123263284

Fax: 6122933841

Bioworld technology, co. Ltd.

Add: No 9, weidi road Qixia District Nanjing, 210046, P. R. China.

Email: info@biogot.com

Tel: 0086-025-68037686

Fax: 0086-025-68035151