

## LAMP1 polyclonal antibody

Catalog: BS6978

Host: Rabbit

Reactivity: Human, Mouse, Rat

### Background:

LAMP-1 (also designated CD107a) and LAMP-2 (also designated CD107b) are involved in a variety of functions, including cellular adhesion, and are thought to participate in the process of tumor invasion and metastasis. Newly synthesized LAMP-1 and LAMP-2 proteins are sorted at the trans-Golgi network and are transported intracellularly via a pathway that is distinct from the Clathrin-coated vesicles used for the mannose-6 phosphate receptor.

### Product:

Rabbit IgG, 1mg/ml in PBS with 0.02% sodium azide, 50% glycerol, pH7.2

### Molecular Weight:

~ 125 kDa

### Swiss-Prot:

P11279

### Purification&Purity:

The antibody was affinity-purified from rabbit antiserum by affinity-chromatography using epitope-specific immunogen and the purity is > 95% (by SDS-PAGE).

### Applications:

WB 1:500 - 1:2000<br>IF 1:50 - 1:200

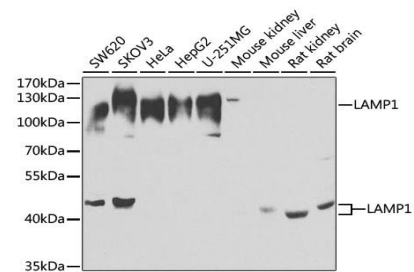
### Storage&Stability:

Store at 4 °C short term. Aliquot and store at -20 °C long term. Avoid freeze-thaw cycles.

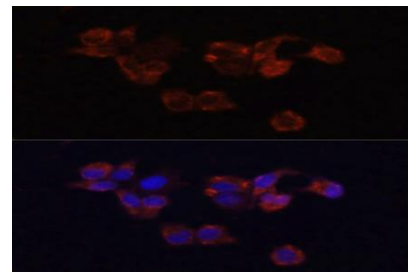
### Specificity:

CD107a polyclonal antibody detects endogenous levels of CD107a protein.

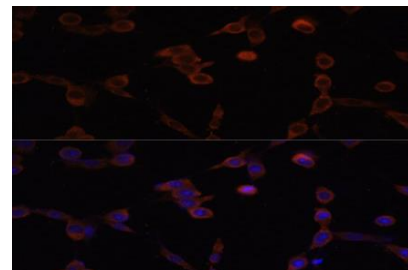
### DATA:



Western blot analysis of LAMP1 polyclonal antibody



Immunohistochemistry (IHC) analysis of LAMP1 polyclonal antibody in paraffin-embedded Human Stomach tissue.



Immunofluorescence analysis of HeLa cells, using LAMP1 polyclonal antibody

### Note:

For research use only, not for use in diagnostic procedure.

### Bioworld Technology, Inc.

Add: 1660 South Highway 100, Suite 500 St. Louis Park, MN 55416, USA.

Email: [info@bioworld.com](mailto:info@bioworld.com)

Tel: 6123263284

Fax: 6122933841

### Bioworld technology, co. Ltd.

Add: No 9, weidi road Qixia District Nanjing, 210046, P. R. China.

Email: [info@biogot.com](mailto:info@biogot.com)

Tel: 0086-025-68037686

Fax: 0086-025-68035151