

CD13 polyclonal antibody

Catalog: BS6979

Host: Rabbit

Reactivity: Human, Mouse

BackGround:

Human CD13 is expressed on the majority of peripheral blood monocytes and granulocytes. It is also expressed by the majority of acute myeloid leukemias, chronic myeloid leukemias in myeloid blast crisis, a smaller percentage of lymphoid leukemias and myeloid cell lines. CD13 is also found in several types of non hematopoietic cells such as fibroblasts and endothelial cells and in a soluble form in blood plasma. CD13 is not expressed on B cells, T cells, platelets or erythrocytes. In the mouse, CD13 is a non-covalently linked homodimer of approximately 150kD subunits expressed by a variety of cells including monocytes, macrophages, dendritic cell and veiled cells.

Product:

Rabbit IgG, 1mg/ml in PBS with 0.02% sodium azide, 50% glycerol, pH7.2

Molecular Weight:

~ 180 kDa

Swiss-Prot:

P15144

Purification&Purity:

The antibody was affinity-purified from rabbit antiserum by affinity-chromatography using epitope-specific immunogen and the purity is > 95% (by SDS-PAGE).

Applications:

WB 1:500 - 1:2000
IF 1:50 - 1:200

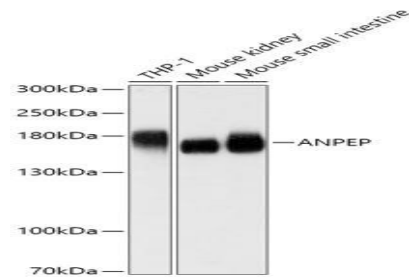
Storage&Stability:

Store at 4 °C short term. Aliquot and store at -20 °C long term. Avoid freeze-thaw cycles.

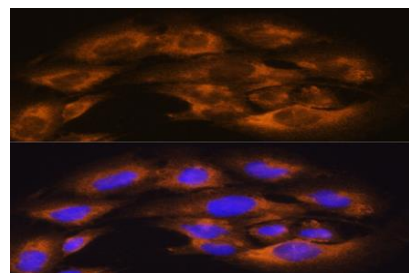
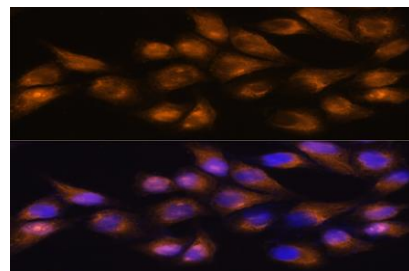
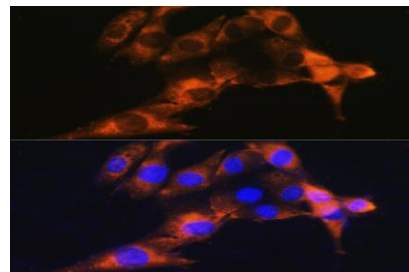
Specificity:

CD13 polyclonal antibody detects endogenous levels of CD13 protein.

DATA:



Western blot analysis of CD13 polyclonal antibody



Note:

For research use only, not for use in diagnostic procedure.

Bioworld Technology, Inc.

Add: 1660 South Highway 100, Suite 500 St. Louis Park, MN 55416, USA.

Email: info@bioworld.com

Tel: 6123263284

Fax: 6122933841

Bioworld technology, co. Ltd.

Add: No 9, weidi road Qixia District Nanjing, 210046, P. R. China.

Email: info@biogot.com

Tel: 0086-025-68037686

Fax: 0086-025-68035151