

SREBP-1 polyclonal antibody

Catalog: BS70008

Host: Rabbit

Reactivity: Human, Rat

BackGround:

Transcription of the LDL receptor gene is controlled by a ten base pair sequence in the 5' flanking region, designated sterol regulatory element 1 (SRE-1). When cellular sterol stores are depleted, the element is activated, the gene is transcribed and the cellular uptake of LDL increases. SREBP-1 (also designated ADD1, for adipocyte determination and differentiation factor) is synthesized as a precursor that is attached to the nuclear envelope and endoplasmic reticulum. In sterol-depleted cells, the membrane-bound precursor is cleaved to generate a soluble NH₂-terminal fragment that translocates to the nucleus to activate transcription. Sterols inhibit the cleavage of SREBP-1.

Product:

Rabbit IgG, 1mg/ml in PBS with 0.02% sodium azide, 50% glycerol, pH7.2

Molecular Weight:

~ 68, 122 kDa

Swiss-Prot:

P36956

Purification&Purity:

The antibody was affinity-purified from rabbit antiserum by affinity-chromatography using epitope-specific immunogen and the purity is > 95% (by SDS-PAGE).

Applications:

WB: 1:500~1:2000

IHC: 1:50~1:200

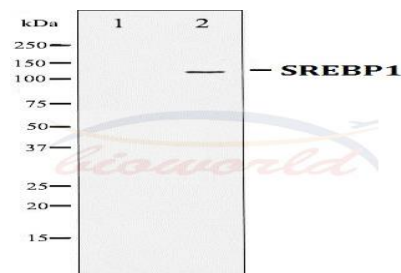
Storage&Stability:

Store at 4 °C short term. Aliquot and store at -20 °C long term. Avoid freeze-thaw cycles.

Specificity:

SREBP-1 polyclonal antibody detects endogenous levels of SREBP-1 protein.

DATA:



Western blot analysis of SREBP-1 expression in TNF treated JK cell lysates. The lane on the left is treated with the antigen-specific peptide.

Note:

For research use only, not for use in diagnostic procedure.

Bioworld Technology, Inc.

Add: 1660 South Highway 100, Suite 500 St. Louis Park, MN 55416, USA.

Email: info@bioworld.com

Tel: 6123263284

Fax: 6122933841

Bioworld technology, co. Ltd.

Add: No 9, weidi road Qixia District Nanjing, 210046, P. R. China.

Email: info@biogot.com

Tel: 0086-025-68037686

Fax: 0086-025-68035151