

## Cleaved-ITI-H1 (D672) polyclonal antibody

Catalog: BS7037

Host: Rabbit

Reactivity: Human, Mouse, Rat

### BackGround:

The inter- $\alpha$  trypsin inhibitor (ITI) family is a group of structurally related plasma serine protease inhibitors synthesized in the liver and built up from different combinations of three highly homologous heavy chains (ITI-H1, ITI-H2 and ITI-H3) and one light chain (Bikunin). A fourth member of the ITI family, ITI-H4 (also known as I a IH4P) harbors a Pro-rich region (PRR) in its C-terminus. ITI is a glycoprotein composed of three polypeptides linked by chondroitin sulphate: two heavy chains, ITI-H1 and ITI-H2, and Bikunin. Bikunin confers the protease-inhibitor function of ITI. The heavy chains of the ITI family, designated as SHAPs (for serum-derived hyaluronan-associated proteins), bind covalently to hyaluronic acid (HA), resulting in pericellular matrix stabilization. ITI-H1 contains a potential peptide which could stimulate a broad spectrum of phagocytotic cells. Although ITI-H1, ITI-H3 and Bikunin have anti-tumoral and antimetastatic properties in the cell, they are also associated with malignant transformation of lung tissue. ITI-H1 and ITI-H2 are associated with calcium oxalate stone formation in kidney and urine.

### Product:

Rabbit IgG, 1mg/ml in PBS with 0.02% sodium azide, 50% glycerol, pH7.2

### Molecular Weight:

~ 71, 101 kDa

### Swiss-Prot:

P19827

### Purification&Purity:

The antibody was affinity-purified from rabbit antiserum by affinity-chromatography using epitope-specific immunogen and the purity is > 95% (by SDS-PAGE).

### Applications:

WB: 1:500~1:1000

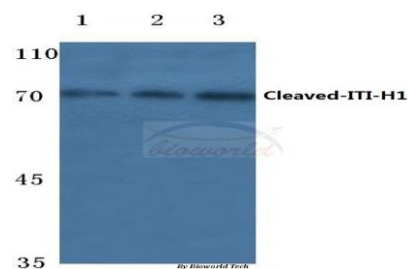
### Storage&Stability:

Store at 4 °C short term. Aliquot and store at -20 °C long term. Avoid freeze-thaw cycles.

### Specificity:

Cleaved-ITI-H1 (D672) polyclonal antibody detects endogenous levels of Cleaved-ITI-H1 (71 kDa) protein.

### DATA:



Western blot (WB) analysis of Cleaved-ITI-H1 (D672) polyclonal antibody pAb at 1:500 dilution

Lane1:A549 cell lysate

Lane2:Mouse lung tissue lysate

Lane3:Rat kidney tissue lysate

### Note:

For research use only, not for use in diagnostic procedure.

### Bioworld Technology, Inc.

Add: 1660 South Highway 100, Suite 500 St. Louis Park, MN 55416, USA.

Email: [info@bioworld.com](mailto:info@bioworld.com)

Tel: 6123263284

Fax: 6122933841

### Bioworld technology, co. Ltd.

Add: No 9, weidi road Qixia District Nanjing, 210046, P. R. China.

Email: [info@biogot.com](mailto:info@biogot.com)

Tel: 0086-025-68037686

Fax: 0086-025-68035151