

## Cleaved-Spectrin $\alpha$ II (D1185) polyclonal antibody

Catalog: BS7056

Host: Rabbit

Reactivity: Human

### BackGround:

Fodrin (also named nonerythroid spectrin) is a universally expressed membrane-associated cytoskeletal protein consisting of  $\alpha$ - and  $\beta$ -subunits. This protein is important for maintaining normal membrane structure and supporting cell surface protein function. Alpha-fodrin is one of the primary targets cleaved by caspases during apoptosis. The full length 240 kDa protein can be cleaved at several sites within its sequence by activated caspases to yield amino-terminal 150 kDa, carboxy-terminal 120 kDa and 35 kDa major products. Cleavage of alpha-fodrin leads to membrane malfunction and cell shrinkage.

### Product:

Rabbit IgG, 1mg/ml in PBS with 0.02% sodium azide, 50% glycerol, pH7.2

### Molecular Weight:

~ 180, 290 kDa

### Swiss-Prot:

Q13813

### Purification&Purity:

The antibody was affinity-purified from rabbit antiserum by affinity-chromatography using epitope-specific immunogen and the purity is > 95% (by SDS-PAGE).

### Applications:

WB: 1:500~1:1000

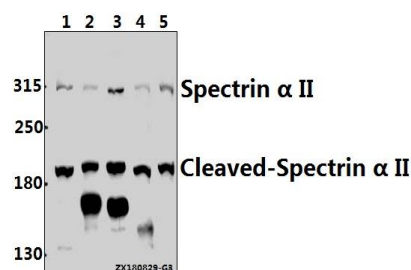
### Storage&Stability:

Store at 4 °C short term. Aliquot and store at -20 °C long term. Avoid freeze-thaw cycles.

### Specificity:

Cleaved-Spectrin  $\alpha$  II pAb detects endogenous levels of Cleaved-Spectrin  $\alpha$  II protein.

### DATA:



Western blot (WB) analysis of Cleaved-Spectrin  $\alpha$  II (D1185) pAb at 1:500 dilution

Lane1:Hela whole cell lysate(40ug)

Lane2:A549 whole cell lysate(40ug)

Lane3:Panc1 whole cell lysate(40ug)

Lane4:PC12 whole cell lysate(40ug)

Lane5:CT26 whole cell lysate(40ug)

### Note:

For research use only, not for use in diagnostic procedure.

### Bioworld Technology, Inc.

Add: 1660 South Highway 100, Suite 500 St. Louis Park, MN 55416, USA.

Email: [info@bioworld.com](mailto:info@bioworld.com)

Tel: 6123263284

Fax: 6122933841

### Bioworld technology, co. Ltd.

Add: No 9, weidi road Qixia District Nanjing, 210046, P. R. China.

Email: [info@biogot.com](mailto:info@biogot.com)

Tel: 0086-025-68037686

Fax: 0086-025-68035151